

Recombinant Human LILRA3 Protein (Met1-Glu439), C-His tagged

Cat. No. LILRA3-3956H Lot. No. (See product label)

SPECIFICATION

Product Overview	Recombinant human LILRA3 (Met1-Glu439) fused with the C-terminal His tag was expressed in Mammalian cells.
Species	Human
Source	Mammalian Cells
ProteinLength	Met1-Glu439
Form	Lyophilized powder/frozen liquid
Molecular Mass	48.29 kDa
Endotoxin	< 1.0 EU/μg of the protein as determined by the LAL method.
Purity	>90% as determined by SDS-PAGE.
Notes	For research use only.
Storage	Use a manual defrost freezer and avoid repeated freeze thaw cycles. Store at 2 to 8 centigrade for one week. Store at -20 to -80 centigrade for twelve months from the date of receipt.
Storage Buffer	Supplied as solution form in PBS or lyophilized from PBS.

 Tel: 1-631-559-9269 1-516-512-3133

 Email: info@creative-biomart.com  Fax: 1-631-938-8127

 45-1 Ramsey Road, Shirley, NY 11967, USA

Reconstitution Reconstitute in sterile water for a stock solution.

Shipping They are shipped out with dry ice/blue ice unless customers require otherwise.

GENE INFORMATION

Gene Name LILRA3 leukocyte immunoglobulin-like receptor, subfamily A (without TM domain), member 3 [Homo sapiens (human)]

Official Symbol LILRA3

Synonyms LILRA3; leukocyte immunoglobulin-like receptor, subfamily A (without TM domain), member 3; leukocyte immunoglobulin-like receptor subfamily A member 3; CD85e; HM31; HM43; ILT6; LIR 4; LIR4; ILT-6; immunoglobulin-like transcript 6; CD85 antigen-like family member E; leucocyte immunoglobulin-like receptor; monocyte inhibitory receptor HM43/HM31; leukocyte immunoglobulin-like receptor 4; leukocyte immunoglobulin-like receptor A3; e3; CD85E; LIR-4;

Gene ID 11026

mRNA Refseq NM_001172654

Protein Refseq NP_001166125

MIM 604818

UniProt ID Q8N6C8

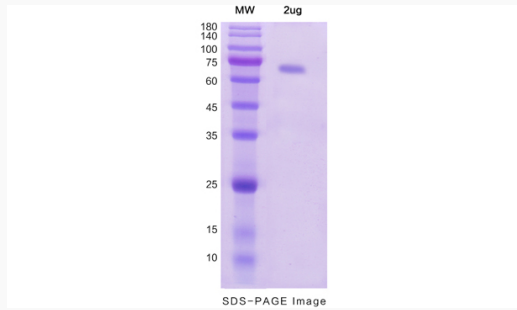
 Tel: 1-631-559-9269 1-516-512-3133

 Email: info@creative-biomart.com  Fax: 1-631-938-8127

 45-1 Ramsey Road, Shirley, NY 11967, USA



SDS-PAGE



Tel: 1-631-559-9269 1-516-512-3133

Email: info@creative-biomart.com Fax: 1-631-938-8127

45-1 Ramsey Road, Shirley, NY 11967, USA