

Recombinant Human LILRA3 protein, His-Avi-tagged

Cat. No. LILRA3-868H Lot. No. (See product label)

SPECIFICATION

Product Overview	Human LILRA3 Protein is expressed from mammalian with His and Avi Tag at the C-terminal. It contains Gly24-Glu439.
Species	Human
Source	HEK293
ProteinLength	Gly24-Glu439
Description	Human LILRA3, also known as Leukocyte Ig-like receptor 4 (LIR-4), CD85 antigen-like family member E, Immunoglobulin-like transcript 6 (ILT-6) and monocyte inhibitory receptor HM43/HM31, is a 70 kD Ig superfamily member that belongs to the leukocyte receptor complex/cluster. Mature LILRA3 is 416 amino acids (aa) in length and contains four C2-type Ig-like domains. Unlike other LILR family members, LILRA3 is actively secreted. LILRA3 acts as soluble receptor for class I MHC antigens. LILRA3 binds both classical and non-classical HLA class I molecules but with reduced affinities compared to LILRB1 or LILRB2. Binds with high affinity to the surface of monocytes, leading to abolish LPS-induced TNF-alpha production by monocytes.
Form	Supplied as 0.22um filtered solution in 20mM PB, 150mM NaCl (pH 7.4).
Molecular Mass	The protein has a predicted MW of 47.9 kDa. Due to glycosylation, the protein migrates to 68-72KDa based on Bis-Tris PAGE result.

 Tel: 1-631-559-9269 1-516-512-3133

 Email: info@creative-biomart.com  Fax: 1-631-938-8127

 45-1 Ramsey Road, Shirley, NY 11967, USA

Endotoxin	Less than 0.01EU per ug by the LAL method.
Purity	> 95% as determined by SDS-PAGE; > 90% as determined by HPLC
Storage	The product should be stored at -70°C. Please do not repeated freeze-thaw cycles.
Reconstitution	It is recommended that sterile water be added to the vial to prepare a stock solution of 0.2 ug/ul. Centrifuge the vial at 4°C before opening to recover the entire contents.

GENE INFORMATION

Gene Name	LILRA3 leukocyte immunoglobulin-like receptor, subfamily A (without TM domain), member 3 [Homo sapiens]
Official Symbol	LILRA3
Synonyms	CD85 antigen-like family member E; CD85e antigen; CD85e; HM31; HM43; ILT6; ILT-6; ILT6CD85e; Immunoglobulin-like transcript 6; leucocyte immunoglobulin-like receptor; Leukocyte immunoglobulin-like receptor 4; leukocyte immunoglobulin-like receptor A3; leukocyte immunoglobulin-like receptor subfamily A member 3; leukocyte immunoglobulin-like receptor, subfamily A (without TM domain), member3; LILRA3; LIR4; LIR4CD85E; LIR-4HM43e3; Monocyte inhibitory receptor HM43/HM31
Gene ID	11026
mRNA Refseq	NM_001172654.2
Protein Refseq	NP_001166125.1
MIM	604818

 Tel: 1-631-559-9269 1-516-512-3133

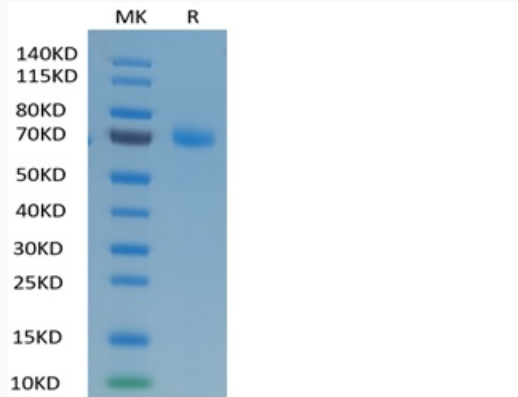
 Email: info@creative-biomart.com  Fax: 1-631-938-8127

 45-1 Ramsey Road, Shirley, NY 11967, USA

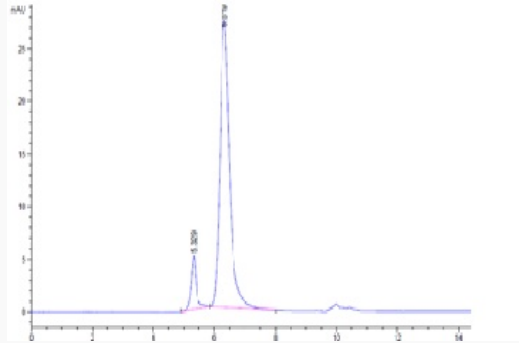
UniProt ID


Q8N6C8

Tris-Bis PAGE



HPLC data



 Tel: 1-631-559-9269 1-516-512-3133

 Email: info@creative-biomart.com  Fax: 1-631-938-8127

 45-1 Ramsey Road, Shirley, NY 11967, USA