

Recombinant Human LILRA5 Protein (Met1-Arg268), C-His tagged

Cat. No. LILRA5-4262H Lot. No. (See product label)

SPECIFICATION

Product Overview	Recombinant human LILRA5 (Met1-Arg268) fused with the C-terminal His tag was expressed in Mammalian cells.
Species	Human
Source	Mammalian Cells
ProteinLength	Met1-Arg268
Form	Lyophilized powder/frozen liquid
Molecular Mass	29.48 kDa
Endotoxin	< 1.0 EU/μg of the protein as determined by the LAL method.
Purity	>90% as determined by SDS-PAGE.
Notes	For research use only.
Storage	Use a manual defrost freezer and avoid repeated freeze thaw cycles. Store at 2 to 8 centigrade for one week. Store at -20 to -80 centigrade for twelve months from the date of receipt.
Storage Buffer	Supplied as solution form in PBS or lyophilized from PBS.

 Tel: 1-631-559-9269 1-516-512-3133

 Email: info@creative-biomart.com  Fax: 1-631-938-8127

 45-1 Ramsey Road, Shirley, NY 11967, USA

Reconstitution Reconstitute in sterile water for a stock solution.

Shipping They are shipped out with dry ice/blue ice unless customers require otherwise.

GENE INFORMATION

Gene Name LILRA5 leukocyte immunoglobulin-like receptor, subfamily A (with TM domain), member 5 [Homo sapiens (human)]

Official Symbol LILRA5

Synonyms LILRA5; leukocyte immunoglobulin-like receptor, subfamily A (with TM domain), member 5; LILRB7; leukocyte immunoglobulin-like receptor subfamily A member 5; CD85; CD85f; ILT11; LIR9; leukocyte Ig-like receptor 9; CD85 antigen-like family member F; leukocyte immunoglobulin-like receptor 9; immunoglobulin-like transcript 11 protein; leukocyte immunoglobulin-like receptor subfamily A member 5 soluble; leukocyte immunoglobulin-like receptor, subfamily B (with TM and ITIM domains), member 7; CD85F; LIR-9; ILT-11;

Gene ID 353514

mRNA Refseq NM_021250

Protein Refseq NP_067073

MIM 606047

UniProt ID A6NI73

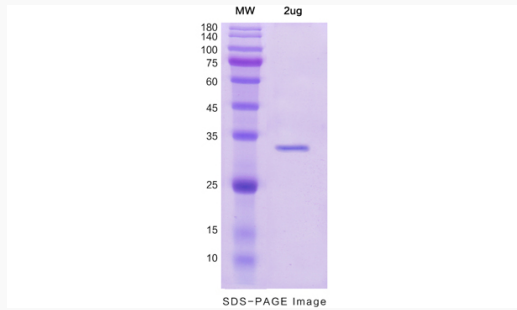
 Tel: 1-631-559-9269 1-516-512-3133

 Email: info@creative-biomart.com  Fax: 1-631-938-8127

 45-1 Ramsey Road, Shirley, NY 11967, USA



SDS-PAGE



Tel: 1-631-559-9269 1-516-512-3133

Email: info@creative-biomart.com Fax: 1-631-938-8127

45-1 Ramsey Road, Shirley, NY 11967, USA