

## Recombinant Human LILRA5 protein, His-Avi-tagged

Cat. No. LILRA5-673H Lot. No. (See product label)

### SPECIFICATION

<b>Product Overview</b>	Recombinant Human LILRA5 Protein is expressed from mammalian with His and Avi Tag at the C-terminal. It contains Gly42-Arg268.
<b>Species</b>	Human
<b>Source</b>	HEK293
<b>ProteinLength</b>	Gly42-Arg268
<b>Description</b>	The leukocyte immunoglobulin-like receptors (LILR) comprise a family of activating and inhibitory type immunoreceptors whose genes are located in the same locus that encodes killer cell Ig-like receptors (KIRs). Human LILRA5, also known as ILT11, LIR-9, and CD85f, consists of a 227 amino acid (aa) extracellular domain (ECD), a 21 aa transmembrane segment, and a 10 aa cytoplasmic tail. LILRA5 may play a role in triggering innate immune responses. Does not seem to play a role for any class I MHC antigen recognition.
<b>Form</b>	Supplied as 0.22um filtered solution in PBS (pH 7.4).
<b>Molecular Mass</b>	The protein has a predicted MW of 28.2 kDa. Due to glycosylation, the protein migrates to 38-50 kDa based on Bis-Tris PAGE result.
<b>Endotoxin</b>	Less than 1 EU per ug by the LAL method.
<b>Purity</b>	> 95% as determined by Bis-Tris PAGE; > 95% as determined by HPLC

 Tel: 1-631-559-9269 1-516-512-3133

 Email: [info@creative-biomart.com](mailto:info@creative-biomart.com)  Fax: 1-631-938-8127

 45-1 Ramsey Road, Shirley, NY 11967, USA

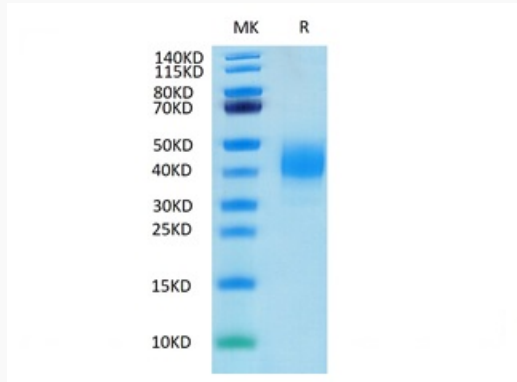
<b>Storage</b>	The product should be stored at -70°C. Please do not repeated freeze-thaw cycles.
<b>Reconstitution</b>	It is recommended that sterile water be added to the vial to prepare a stock solution of 0.2 ug/ul. Centrifuge the vial at 4°C before opening to recover the entire contents.
<b>GENE INFORMATION</b>	
<b>Gene Name</b>	LILRA5 leukocyte immunoglobulin-like receptor, subfamily A (with TM domain), member 5 [ Homo sapiens ]
<b>Official Symbol</b>	LILRA5
<b>Synonyms</b>	CD85 antigen-like family member F; CD85; CD85f antigen; CD85f; ILT11; ILT-11; ILT11CD85f; Immunoglobulin-like transcript 11; leukocyte Ig-like receptor 9; Leukocyte immunoglobulin-like receptor 9; leukocyte immunoglobulin-like receptor subfamily A member 5 soluble; leukocyte immunoglobulin-like receptor subfamily A member 5; leukocyte immunoglobulin-like receptor, subfamily A (with TM domain), member 5; leukocyte immunoglobulin-like receptor, subfamily B (with TM and ITIM domains); LILRA5; LILRB7; LIR9; LIR-9; LIR9immunoglobulin-like transcript 11 protein; member 7
<b>Gene ID</b>	353514
<b>mRNA Refseq</b>	NM_021250. 4
<b>Protein Refseq</b>	NP_067073. 1
<b>MIM</b>	606047
<b>UniProt ID</b>	A6NI73

 Tel: 1-631-559-9269 1-516-512-3133

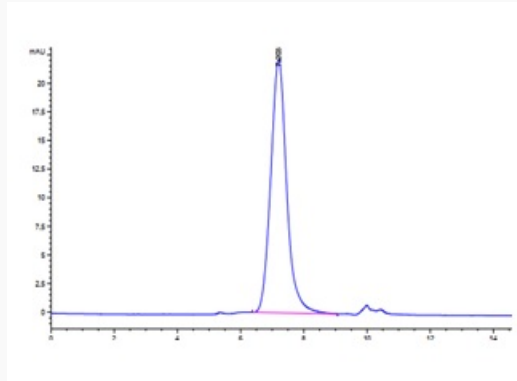
 Email: [info@creative-biomart.com](mailto:info@creative-biomart.com)  Fax: 1-631-938-8127

 45-1 Ramsey Road, Shirley, NY 11967, USA

**Tris-Bis PAGE**



**HPLC data**



 Tel: 1-631-559-9269 1-516-512-3133

 Email: [info@creative-biomart.com](mailto:info@creative-biomart.com)  Fax: 1-631-938-8127

 45-1 Ramsey Road, Shirley, NY 11967, USA