

Active Recombinant Human LILRB1 Protein, His-tagged

Cat. No. LILRB1-028H Lot. No. (See product label)

SPECIFICATION

| | |
|-------------------------|---|
| Product Overview | Recombinant human LILRB1, fused to His-tag at C-terminus, was expressed in insect cell and purified by using conventional chromatography techniques. |
| Species | Human |
| Source | Insect cells |
| Description | This gene is a member of the leukocyte immunoglobulin-like receptor (LIR) family, which is found in a gene cluster at chromosomal region 19q13.4. The encoded protein belongs to the subfamily B class of LIR receptors which contain two or four extracellular immunoglobulin domains, a transmembrane domain, and two to four cytoplasmic immunoreceptor tyrosine-based inhibitory motifs (ITIMs). The receptor is expressed on immune cells where it binds to MHC class I molecules on antigen-presenting cells and transduces a negative signal that inhibits stimulation of an immune response. It is thought to control inflammatory responses and cytotoxicity to help focus the immune response and limit autoreactivity. Multiple transcript variants encoding different isoforms have been found for this gene. |
| Form | Liquid |
| Bio-activity | Measured by the ability of the immobilized protein to support the adhesion of HSB2 human peripheral blood acute lymphoblastic leukemia cells. When cells are added to LILRB1 coated plates 5µg/mL. This effect is more to 50%. |
| Molecular Mass | 48.5 kDa |

 Tel: 1-631-559-9269 1-516-512-3133

 Email: info@creative-biomart.com  Fax: 1-631-938-8127

 45-1 Ramsey Road, Shirley, NY 11967, USA

AA Sequence

GHLPKPTLWAEPGSVITQGSPVTLRCQGGQETQEYRLYREKKTAPWITRIPQELVKK
 GQFPIPSITWEHTGRYRCYYGSDTAGRSESSDPLELVVTGAYIKPTLSAQSPVVNS
 GGNVTLQCDSQVAFDGFILCKEGEDHPQCLNSQPHARGSSRAIFSVGPVSPSRR
 WWYRCYAYDSNSPYEWSLPSDLLELLVLGVSKKPSLSVQPGPIVAPEETLTLQCGS
 DAGYNRFVLYKDGERDFLQLAGAQPQAGLSQANFTLGPVSRSYGGQYRCYGAHNL
 SSEWSAPSDPLDILIAGQFYDRVLSLVQPGPTVASGENVTLLCQSQGWMQTFLLT
 EGAADDPWRLRSTYQSQKYQAEFPMGPVTSAHAGTYRCYGSQSSKPYLLTHPSDP
 LELVVSGPSGGPSSPTTGPTSTSGPEDQPLTPTGSDPQSGGLGRHLGV

Endotoxin < 1 EU/μg of protein (determined by LAL method)

Purity > 95% by SDS-PAGE

Applications SDS-PAGE, Bioactivity

Storage Can be stored at +2 to +8 centigrade for 1 week. For long term storage, aliquot and store at -20 to -107 centigrade. Avoid repeated freezing and thawing cycles.

Concentration 0.25 mg/mL (determined by absorbance at 280nm)

Storage Buffer Phosphate-Buffered Saline (pH 7.4) containing 10% glycerol

GENE INFORMATION

Gene Name LILRB1 leukocyte immunoglobulin like receptor B1 [Homo sapiens (human)]

Official Symbol LILRB1

Synonyms LILRB1; leukocyte immunoglobulin like receptor B1; ILT2; LIR1; MIR7; PIRB; CD85J; ILT-2; LIR-1; MIR-7; PIR-B; leukocyte immunoglobulin-like receptor subfamily B member 1; CD85 antigen-like family member J; Ig-like transcript 2; leucocyte Ig-like

 Tel: 1-631-559-9269 1-516-512-3133

 Email: info@creative-biomart.com  Fax: 1-631-938-8127

 45-1 Ramsey Road, Shirley, NY 11967, USA

receptor B1; leukocyte immunoglobulin-like receptor, subfamily B (with TM and ITIM domains), member 1; monocyte/macrophage immunoglobulin-like receptor 7; myeloid inhibitory receptor 7

Gene ID 10859

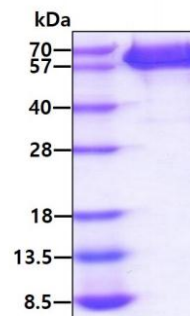
mRNA Refseq NM_006669

Protein Refseq NP_006660

MIM 604811

UniProt ID Q8NHL6

SDS-PAGE



3 µg by SDS-PAGE under reducing condition and visualized by coomassie blue stain

 Tel: 1-631-559-9269 1-516-512-3133

 Email: info@creative-biomart.com  Fax: 1-631-938-8127

 45-1 Ramsey Road, Shirley, NY 11967, USA