

Recombinant Human LILRB1 protein, hFc-tagged

Cat. No. LILRB1-086H Lot. No. (See product label)

SPECIFICATION

Product Overview	Recombinant Human LILRB1 protein(Q8NHL6-1)(Gly24-His458), fused with C-terminal hFc tag, was expressed in HEK293.
Species	Human
Source	HEK293
ProteinLength	Gly24-His458
Tag	C-hFc
Form	Lyophilized from 0.22µm filtered solution in PBS (pH 7.4). Normally 5% trehalose is added as protectant before lyophilization.
Bio-activity	Immobilized Human LILRB1, hFc Tag at 1µg/ml (100µl/Well) on the plate. Dose response curve for Biotinylated Anti-LILRB1 Antibody, hFc Tag with the EC50 of 10.0ng/ml determined by ELISA.
Molecular Mass	The protein has a predicted MW of 73.8 kDa. Due to glycosylation, the protein migrates to 78-105 kDa based on Tris-Bis PAGE result.
Endotoxin	Less than 1EU per µg by the LAL method.
Purity	> 95% as determined by Tris-Bis PAGE; > 95% as determined by HPLC

 Tel: 1-631-559-9269 1-516-512-3133

 Email: info@creative-biomart.com  Fax: 1-631-938-8127

 45-1 Ramsey Road, Shirley, NY 11967, USA

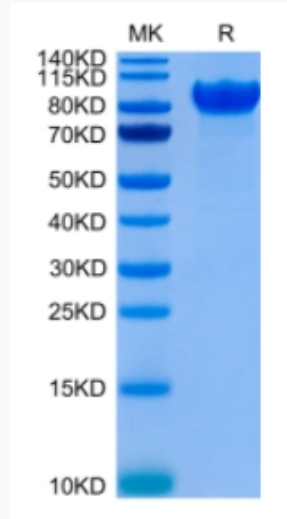
Storage	Reconstituted protein stable at -80°C for 12 months, 4°C for 1 week. Use a manual defrost freezer and avoid repeated freeze-thaw cycles.
Reconstitution	Centrifuge tubes before opening. Reconstituting to a concentration more than 100 µg/ml is recommended. Dissolve the lyophilized protein in distilled water.
GENE INFORMATION	
Gene Name	LILRB1 leukocyte immunoglobulin-like receptor, subfamily B (with TM and ITIM domains), member 1 [Homo sapiens]
Official Symbol	LILRB1
Synonyms	LILRB1; leukocyte immunoglobulin-like receptor, subfamily B (with TM and ITIM domains), member 1; leukocyte immunoglobulin-like receptor subfamily B member 1; CD85; CD85j; ILT2; LIR 1; LIR1; MIR 7; ILT-2; CD85 antigen; Ig-like transcript 2; leukocyte Ig-like receptor-1; immunoglobulin-like transcript 2; CD85 antigen-like family member J; leukocyte immunoglobulin-like receptor 1; monocyte/macrophage immunoglobulin-like receptor 7; leukocyte immunoglobulin-like receptor subfamily B member 1 soluble isoform; MIR7; CD85J; LIR-1; MIR-7; FLJ37515;
Gene ID	10859
mRNA Refseq	NM_001081637
Protein Refseq	NP_001075106
MIM	604811
UniProt ID	Q8NHL6

 Tel: 1-631-559-9269 1-516-512-3133

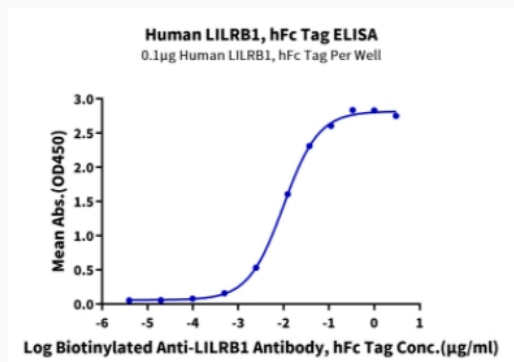
 Email: info@creative-biomart.com  Fax: 1-631-938-8127


 45-1 Ramsey Road, Shirley, NY 11967, USA

Tris-Bis PAGE




ELISA Data



 Tel: 1-631-559-9269 1-516-512-3133

 Email: info@creative-biomart.com  Fax: 1-631-938-8127

 45-1 Ramsey Road, Shirley, NY 11967, USA