

## Recombinant Human LILRB1 protein, His-Avi-tagged

Cat. No. LILRB1-087H Lot. No. (See product label)

### SPECIFICATION

<b>Product Overview</b>	Recombinant Human LILRB1 protein(Q8NHL6-1)(Gly24-His458), fused with C-terminal His and Avi tag, was expressed in HEK293.
<b>Species</b>	Human
<b>Source</b>	HEK293
<b>ProteinLength</b>	Gly24-His458
<b>Tag</b>	C-His-Avi
<b>Form</b>	Lyophilized from 0.22µm filtered solution in PBS (pH 7.4). Normally 5% trehalose is added as protectant before lyophilization.
<b>Bio-activity</b>	Immobilized Human LILRB1, His Tag at 1µg/ml (100µl/well) on the plate. Dose response curve for Anti-LILRB1 Antibody, hFc Tag with the EC50 of 5.4ng/ml determined by ELISA.
<b>Molecular Mass</b>	The protein has a predicted MW of 50 kDa. Due to glycosylation, the protein migrates to 72-78 kDa based on Tris-Bis PAGE result.
<b>Endotoxin</b>	Less than 1EU per µg by the LAL method.
<b>Purity</b>	> 95% as determined by Tris-Bis PAGE; > 95% as determined by HPLC

 Tel: 1-631-559-9269 1-516-512-3133

 Email: [info@creative-biomart.com](mailto:info@creative-biomart.com)  Fax: 1-631-938-8127

 45-1 Ramsey Road, Shirley, NY 11967, USA

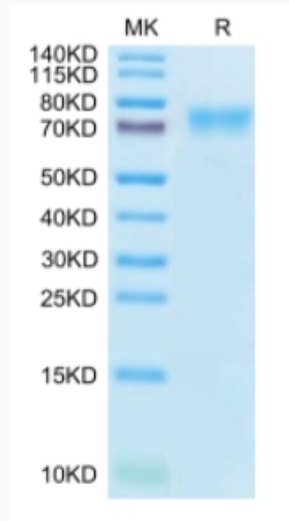
<b>Storage</b>	Reconstituted protein stable at -80°C for 12 months, 4°C for 1 week. Use a manual defrost freezer and avoid repeated freeze-thaw cycles.
<b>Reconstitution</b>	Centrifuge tubes before opening. Reconstituting to a concentration more than 100 µg/ml is recommended. Dissolve the lyophilized protein in distilled water.
<b>GENE INFORMATION</b>	
<b>Gene Name</b>	LILRB1 leukocyte immunoglobulin-like receptor, subfamily B (with TM and ITIM domains), member 1 [ Homo sapiens ]
<b>Official Symbol</b>	LILRB1
<b>Synonyms</b>	LILRB1; leukocyte immunoglobulin-like receptor, subfamily B (with TM and ITIM domains), member 1; leukocyte immunoglobulin-like receptor subfamily B member 1; CD85; CD85j; ILT2; LIR 1; LIR1; MIR 7; ILT-2; CD85 antigen; Ig-like transcript 2; leukocyte Ig-like receptor-1; immunoglobulin-like transcript 2; CD85 antigen-like family member J; leukocyte immunoglobulin-like receptor 1; monocyte/macrophage immunoglobulin-like receptor 7; leukocyte immunoglobulin-like receptor subfamily B member 1 soluble isoform; MIR7; CD85J; LIR-1; MIR-7; FLJ37515;
<b>Gene ID</b>	10859
<b>mRNA Refseq</b>	NM_001081637
<b>Protein Refseq</b>	NP_001075106
<b>MIM</b>	604811
<b>UniProt ID</b>	Q8NHL6

 Tel: 1-631-559-9269 1-516-512-3133

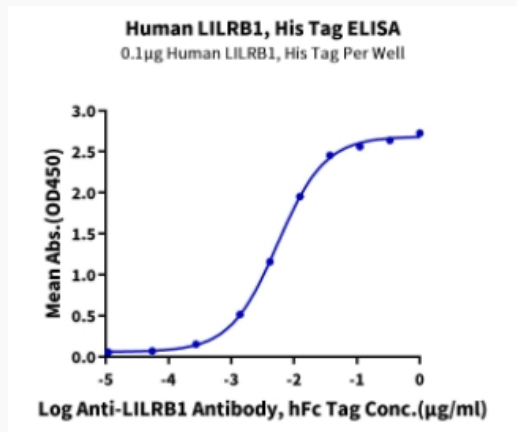
 Email: [info@creative-biomart.com](mailto:info@creative-biomart.com)  Fax: 1-631-938-8127

 45-1 Ramsey Road, Shirley, NY 11967, USA

**Tris-Bis PAGE**



**ELISA Data**



 Tel: 1-631-559-9269 1-516-512-3133

 Email: [info@creative-biomart.com](mailto:info@creative-biomart.com)  Fax: 1-631-938-8127

 45-1 Ramsey Road, Shirley, NY 11967, USA