

Recombinant Human LILRB1 protein, Fc-tagged

Cat. No. LILRB1-110H Lot. No. (See product label)

SPECIFICATION

Product Overview	Recombinant Human LILRB1 protein (Gly24-His458), fused to human IgG1 Fc tag at C-terminus, was expressed in human 293 cells (HEK293).
Species	Human
Source	HEK293
ProteinLength	435
Description	<p>CD85 antigen-like family member J (CD85J) is also known as Leukocyte immunoglobulin-like receptor subfamily B member 1 (LILRB1 or LIR-1), Immunoglobulin-like transcript 2 (ILT-2), Monocyte/macrophage immunoglobulin-like receptor 7 (MIR7), which belongs to leukocyte immunoglobulin-like receptor (LIR) family. CD85J/LILRB1 Contains 4 Ig-like C2-type (immunoglobulin-like) domains. CD85J/ LIR-1 is expressed predominantly on B-cells and monocytes. CD85J is receptor for class I MHC antigens and recognizes a broad spectrum of HLA-A, HLA-B, HLA-C and HLA-G alleles and is also receptor for H301/UL18, a human cytomegalovirus class I MHC homolog. Ligand binding results in inhibitory signals and down-regulation of the immune response. CD85J/LILRB1 interaction with HLA-B or HLA-E leads to inhibition of the signal triggered by FCER1A and inhibits serotonin release. CD85J/LILRB1 inhibits FCGR1A-mediated phosphorylation of cellular proteins and mobilization of intracellular calcium ions.</p>
Form	Lyophilized from 0.22 um filtered solution in 50 mM Tris, 100 mM Glycine, pH7.5,

 Tel: 1-631-559-9269 1-516-512-3133

 Email: info@creative-biomart.com  Fax: 1-631-938-8127

 45-1 Ramsey Road, Shirley, NY 11967, USA

	10% trehalose.
Molecular Mass	The protein has a calculated MW of 73.8 kDa. The protein migrates as 90-105 kDa under reducing (R) condition (SDS-PAGE) due to glycosylation.
Endotoxin	Less than 1.0 EU per ug by the LAL method.
Purity	>92% as determined by SDS-PAGE.
Storage	<p>For long term storage, the product should be stored at lyophilized state at -20 centigrade or lower.</p> <p>Please avoid repeated freeze-thaw cycles.</p> <p>This product is stable after storage at:</p> <p>-20 centigrade to -70 centigrade for 12 months in lyophilized state; -70 centigrade for 3 months under sterile conditions after reconstitution.</p>
Reconstitution	It is recommended that sterile water be added to the vial to prepare a stock solution of 0.2 ug/ul. Centrifuge the vial at 4°C before opening to recover the entire contents.

GENE INFORMATION

Gene Name	LILRB1
Official Symbol	LILRB1
Synonyms	LILRB1; leukocyte immunoglobulin-like receptor, subfamily B (with TM and ITIM domains), member 1; leukocyte immunoglobulin-like receptor subfamily B member 1; CD85; CD85j; ILT2; LIR 1; LIR1; MIR 7; ILT-2; CD85 antigen; Ig-like transcript 2; leukocyte Ig-like receptor-1; immunoglobulin-like transcript 2; CD85 antigen-like family member J; leukocyte immunoglobulin-like receptor 1; monocyte/macrophage immunoglobulin-like receptor 7; leukocyte immunoglobulin-like receptor subfamily B

 Tel: 1-631-559-9269 1-516-512-3133

 Email: info@creative-biomart.com  Fax: 1-631-938-8127

 45-1 Ramsey Road, Shirley, NY 11967, USA

member 1 soluble isoform; MIR7; CD85J; LIR-1; MIR-7; FLJ37515

Gene ID [10859](#)

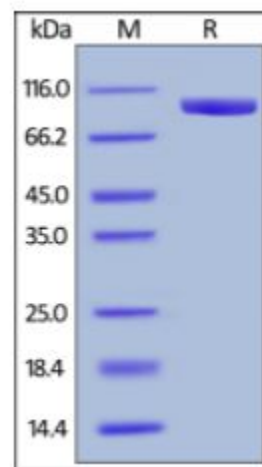
mRNA Refseq [NM_001081637](#)

Protein Refseq [NP_001075106](#)

MIM [604811](#)

UniProt ID [Q8NHL6](#)

**SDS-PAGE of
LILRB1-110H**



Human LILRB1, Fc Tag on SDS-PAGE under reducing (R) condition. The gel was stained overnight with Coomassie Blue. The purity of the protein is greater than 92%.

 Tel: 1-631-559-9269 1-516-512-3133

 Email: info@creative-biomart.com  Fax: 1-631-938-8127

 45-1 Ramsey Road, Shirley, NY 11967, USA