

Recombinant Human leukocyte immunoglobulin like receptor B1 Protein, His&Flag tagged

Cat. No. LILRB1-131H Lot. No. (See product label)

SPECIFICATION

Product Overview	Recombinant human LILRB1/CD85j/ILT2 protein (Q8NHL6) (Gly 24-Vla 461) with both His and Flag tag at the C-terminus was expressed in HEK293.
Species	Human
Source	HEK293
ProteinLength	24-461aa
Description	<p>Receptor for class I MHC antigens. Recognizes a broad spectrum of HLA-A, HLA-B, HLA-C, HLA-G and HLA-F alleles. Receptor for H301/UL18, a human cytomegalovirus class I MHC homolog. Ligand binding results in inhibitory signals and down-regulation of the immune response. Engagement of LILRB1 present on natural killer cells or T-cells by class I MHC molecules protects the target cells from lysis.</p> <p>Interaction with HLA-B or HLA-E leads to inhibition of FCER1A signaling and serotonin release. Inhibits FCGR1A-mediated phosphorylation of cellular proteins and mobilization of intracellular calcium ions. Recognizes HLA-G in complex with B2M/beta-2 microglobulin and a nonamer self-peptide. Upon interaction with peptide-bound HLA-G-B2M complex, triggers secretion of growth-promoting factors by decidual NK cells. Reprograms B cells toward an immune suppressive phenotype.</p>
Tag	C-His&Flag
Molecular Mass	50.2 kDa

 Tel: 1-631-559-9269 1-516-512-3133

 Email: info@creative-biomart.com  Fax: 1-631-938-8127

 45-1 Ramsey Road, Shirley, NY 11967, USA

Endotoxin	Less than 1.0 EU/μg by the LAL method.
Purity	>95% as determined by SDS-PAGE.
Storage	Please avoid repeated freeze-thaw cycles. Samples are stable for up to twelve months from date of receipt at -20 to -80 centigrade. It is recommended that aliquot the reconstituted solution to minimize freeze-thaw cycles.
Storage Buffer	Lyophilized from a 0.2 μm filtered solution of PBS, pH7.4, 5% Trehalose, 5% mannitol.
Reconstitution	Reconstitute at 250 μg/mL in sterile water.
GENE INFORMATION	
Gene Name	LILRB1 leukocyte immunoglobulin like receptor B1 [Homo sapiens (human)]
Official Symbol	LILRB1
Synonyms	LILRB1; leukocyte immunoglobulin-like receptor, subfamily B (with TM and ITIM domains), member 1; leukocyte immunoglobulin-like receptor subfamily B member 1; CD85; CD85j; ILT2; LIR 1; LIR1; MIR 7; ILT-2; CD85 antigen; Ig-like transcript 2; leukocyte Ig-like receptor-1; immunoglobulin-like transcript 2; CD85 antigen-like family member J; leukocyte immunoglobulin-like receptor 1; monocyte/macrophage immunoglobulin-like receptor 7; leukocyte immunoglobulin-like receptor subfamily B member 1 soluble isoform; MIR7; CD85J; LIR-1; MIR-7; FLJ37515;
Gene ID	10859
mRNA Refseq	NM_001081637

 Tel: 1-631-559-9269 1-516-512-3133

 Email: info@creative-biomart.com  Fax: 1-631-938-8127

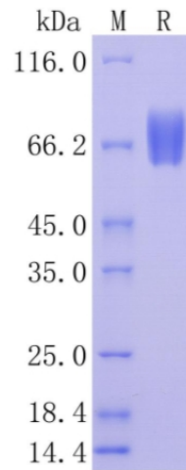
 45-1 Ramsey Road, Shirley, NY 11967, USA

Protein Refseq NP_001075106

MIM 604811

UniProt ID Q8NHL6

**Protein on SDS-
PAGE under
reducing (R)
condition.**



 Tel: 1-631-559-9269 1-516-512-3133

 Email: info@creative-biomart.com  Fax: 1-631-938-8127

 45-1 Ramsey Road, Shirley, NY 11967, USA