

Recombinant Human LILRB1 Protein (Gly24-His458), C-His tagged

Cat. No. LILRB1-3936H Lot. No. (See product label)

SPECIFICATION

Product Overview	Recombinant human LILRB1 (Gly24-His458) fused with the C-terminal His tag was expressed in Mammalian cells.
Species	Human
Source	Mammalian Cells
ProteinLength	Gly24-His458
Form	Lyophilized powder/frozen liquid
Molecular Mass	47.85 kDa
Endotoxin	< 1.0 EU/μg of the protein as determined by the LAL method.
Purity	>90% as determined by SDS-PAGE.
Notes	For research use only.
Storage	Use a manual defrost freezer and avoid repeated freeze thaw cycles. Store at 2 to 8 centigrade for one week. Store at -20 to -80 centigrade for twelve months from the date of receipt.
Storage Buffer	Supplied as solution form in PBS or lyophilized from PBS.

 Tel: 1-631-559-9269 1-516-512-3133

 Email: info@creative-biomart.com  Fax: 1-631-938-8127

 45-1 Ramsey Road, Shirley, NY 11967, USA

Reconstitution Reconstitute in sterile water for a stock solution.

Shipping They are shipped out with dry ice/blue ice unless customers require otherwise.

GENE INFORMATION

Gene Name LILRB1 leukocyte immunoglobulin-like receptor, subfamily B (with TM and ITIM domains), member 1 [Homo sapiens (human)]

Official Symbol LILRB1

Synonyms LILRB1; leukocyte immunoglobulin-like receptor, subfamily B (with TM and ITIM domains), member 1; leukocyte immunoglobulin-like receptor subfamily B member 1; CD85; CD85j; ILT2; LIR 1; LIR1; MIR 7; ILT-2; CD85 antigen; Ig-like transcript 2; leukocyte Ig-like receptor-1; immunoglobulin-like transcript 2; CD85 antigen-like family member J; leukocyte immunoglobulin-like receptor 1; monocyte/macrophage immunoglobulin-like receptor 7; leukocyte immunoglobulin-like receptor subfamily B member 1 soluble isoform; MIR7; CD85J; LIR-1; MIR-7; FLJ37515;

Gene ID 10859

mRNA Refseq NM_001081637

Protein Refseq NP_001075106

MIM 604811

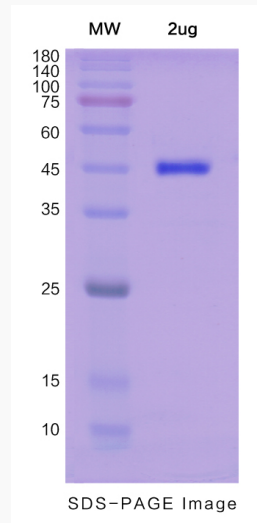
UniProt ID Q8NHL6

 Tel: 1-631-559-9269 1-516-512-3133

 Email: info@creative-biomart.com  Fax: 1-631-938-8127

 45-1 Ramsey Road, Shirley, NY 11967, USA

SDS-PAGE



 Tel: 1-631-559-9269 1-516-512-3133

 Email: info@creative-biomart.com  Fax: 1-631-938-8127

 45-1 Ramsey Road, Shirley, NY 11967, USA