

Recombinant Human LILRB1 Protein, Myc/DDK-tagged, C13 and N15-labeled

Cat. No. LILRB1-5052H **Lot. No.** (See product label)

SPECIFICATION

Product Overview	LILRB1 MS Standard C13 and N15-labeled recombinant protein (NP_006660) with a C-terminal MYC/DDK tag, was expressed in HEK293 cells.
Species	Human
Source	HEK293
Description	<p>This gene is a member of the leukocyte immunoglobulin-like receptor (LIR) family, which is found in a gene cluster at chromosomal region 19q13.4. The encoded protein belongs to the subfamily B class of LIR receptors which contain two or four extracellular immunoglobulin domains, a transmembrane domain, and two to four cytoplasmic immunoreceptor tyrosine-based inhibitory motifs (ITIMs). The receptor is expressed on immune cells where it binds to MHC class I molecules on antigen-presenting cells and transduces a negative signal that inhibits stimulation of an immune response. It is thought to control inflammatory responses and cytotoxicity to help focus the immune response and limit autoreactivity. Multiple transcript variants encoding different isoforms have been found for this gene.</p>
Molecular Mass	70.8 kDa
AA Sequence	<p>MTPILTVLICLGLSLGPRTHVQAGHLPKPTLWAEPGSVITQGSPVTLRCQGGQETQE YRLYREKKTAPWITRIPQELVKKGQFPIPSITWEHAGRYRCYYGSDTAGRSESSDPL ELVVTGAYIKPTLSAQSPVVNSGGNVTLCDSQVAFDGFILCKEGEDEHPQCLNS</p>

 Tel: 1-631-559-9269 1-516-512-3133

 Email: info@creative-biomart.com  Fax: 1-631-938-8127

 45-1 Ramsey Road, Shirley, NY 11967, USA

QPHARGSSRAIFSVGPVSPSRRWWYRCYAYDSNSPYEWSLPSDLLELLVLGVSKK
 PLSLVQP GPIVAPEETLTLQCGSDAGYNRFVLYKDGERDFLQLAGAQPQAGLSQAN
 FTLGPVSRSYGGQYRCYGAHNLSSEWSAPSDPLDILIAGQFYDRVSLSVQPGPTVA
 SGENVTLLCQSQGWMQTFLLTKEGAADDPWRLRSTYQSQKYQAEFPMGPV TSAH
 AGTYRCYGSQSSKP YLLTHPSDPLELVVSGPSGGPSSPTTGPTSTSGPEDQPLTPT
 GSDPQSG LGRHLGVVIGILVAVILL LLLLLLLLLLFLILRHRRQGKHWTSTQRKADFQHPA
 GAVGPEPTDRGLQWRSSPAADAQEENLYAAVKHTQPEDGVEMDTRSPHDEDPQA
 VTYA EVKHSRPRREMASPPSPLSGEFLDTKDRQAEEDRQMDTEAAASEAPQDVTY
 AQLHSLTLRRKATEPPPSQEGPSPAVPSIYATLAIHTRTRPLEQKLISEEDLAANDILD
 YKDDDDKV

Purity > 80% as determined by SDS-PAGE and Coomassie blue staining

Stability Stable for 3 months from receipt of products under proper storage and handling conditions.

Storage Store at -80 centigrade. Avoid repeated freeze-thaw cycles.

Concentration 50 µg/mL as determined by BCA

Storage Buffer 100 mM glycine, 25 mM Tris-HCl, pH 7.3.

GENE INFORMATION

Gene Name LILRB1 leukocyte immunoglobulin like receptor B1 [Homo sapiens (human)]

Official Symbol LILRB1

Synonyms LILRB1; leukocyte immunoglobulin-like receptor, subfamily B (with TM and ITIM domains), member 1; leukocyte immunoglobulin-like receptor subfamily B member 1; CD85; CD85j; ILT2; LIR 1; LIR1; MIR 7; ILT-2; CD85 antigen; Ig-like transcript 2;

 Tel: 1-631-559-9269 1-516-512-3133

 Email: info@creative-biomart.com  Fax: 1-631-938-8127

 45-1 Ramsey Road, Shirley, NY 11967, USA

leukocyte Ig-like receptor-1; immunoglobulin-like transcript 2; CD85 antigen-like family member J; leukocyte immunoglobulin-like receptor 1; monocyte/macrophage immunoglobulin-like receptor 7; leukocyte immunoglobulin-like receptor subfamily B member 1 soluble isoform; MIR7; CD85J; LIR-1; MIR-7; FLJ37515;

Gene ID [10859](#)

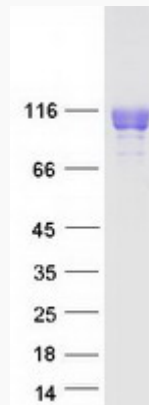
mRNA Refseq [NM_006669](#)

Protein Refseq [NP_006660](#)

MIM [604811](#)

UniProt ID [Q8NHL6](#)

SDS-PAGE



 Tel: 1-631-559-9269 1-516-512-3133

 Email: info@creative-biomart.com  Fax: 1-631-938-8127

 45-1 Ramsey Road, Shirley, NY 11967, USA