

Recombinant Rhesus macaque LILRB1 protein, hFc-tagged

Cat. No. LILRB1-5733R Lot. No. (See product label)

SPECIFICATION

Product Overview	Recombinant Rhesus macaque LILRB1 protein(F7H3G7)(Ser17-His456), fused with C-terminal hFc tag, was expressed in HEK293.
Species	Rhesus macaque
Source	HEK293
ProteinLength	Ser17-His456
Tag	C-hFc
Form	Lyophilized from 0.22µm filtered solution in PBS (pH 7.4). Normally 5% trehalose is added as protectant before lyophilization.
Bio-activity	Anti-LILRB1 Antibody immobilized on CM5 Chip can bind Rhesus macaque LILRB1, hFc Tag with an affinity constant of 51.44 nM as determined in SPR assay (Biacore T200).
Molecular Mass	The protein has a predicted MW of 74.5 kDa. Due to glycosylation, the protein migrates to 80-90 kDa based on Tris-Bis PAGE result.
Endotoxin	Less than 1EU per µg by the LAL method.
Purity	> 95% as determined by Tris-Bis PAGE; > 95% as determined by HPLC

 Tel: 1-631-559-9269 1-516-512-3133

 Email: info@creative-biomart.com  Fax: 1-631-938-8127

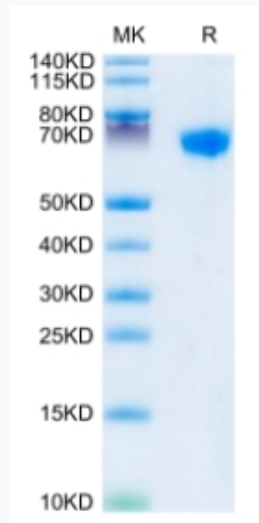
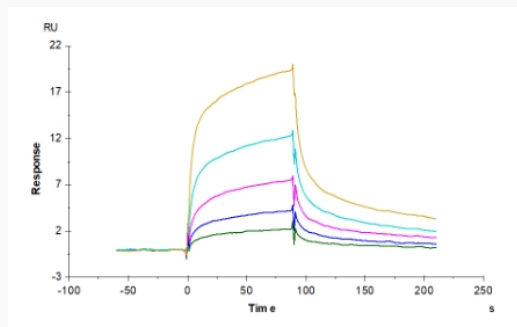
 45-1 Ramsey Road, Shirley, NY 11967, USA

Storage

Reconstituted protein stable at -80°C for 12 months, 4°C for 1 week. Use a manual defrost freezer and avoid repeated freeze-thaw cycles.

Reconstitution

Centrifuge tubes before opening. Reconstituting to a concentration more than 100 µg/ml is recommended. Dissolve the lyophilized protein in distilled water.

Tris-Bis PAGE**SPR Data**

 Tel: 1-631-559-9269 1-516-512-3133

 Email: info@creative-biomart.com  Fax: 1-631-938-8127

 45-1 Ramsey Road, Shirley, NY 11967, USA