

Recombinant Human LILRB1 protein, His & T7-tagged

Cat. No. LILRB1-6900H Lot. No. (See product label)

SPECIFICATION

Product Overview	Recombinant Human LILRB1 aa. (Ser223~His410 (Accession # Q8NHL6)) fused with N-terminal His & T7 tag was produced in E. coli cells.
Species	Human
Source	E.coli
ProteinLength	Ser223~His410
Description	<p>This gene is a member of the leukocyte immunoglobulin-like receptor (LIR) family, which is found in a gene cluster at chromosomal region 19q13.4. The encoded protein belongs to the subfamily B class of LIR receptors which contain two or four extracellular immunoglobulin domains, a transmembrane domain, and two to four cytoplasmic immunoreceptor tyrosine-based inhibitory motifs (ITIMs). The receptor is expressed on immune cells where it binds to MHC class I molecules on antigen-presenting cells and transduces a negative signal that inhibits stimulation of an immune response. It is thought to control inflammatory responses and cytotoxicity to help focus the immune response and limit autoreactivity. Multiple transcript variants encoding different isoforms have been found for this gene.</p>
Form	Freeze-dried powder
Molecular Mass	Predicted Molecular Mass: 24.0kDa.
Endotoxin	<1.0EU per 1ug (determined by the LAL method)

 Tel: 1-631-559-9269 1-516-512-3133

 Email: info@creative-biomart.com  Fax: 1-631-938-8127

 45-1 Ramsey Road, Shirley, NY 11967, USA

Purity	>95%
Characteristic	The isoelectric point is 7.8.
Applications	SDS-PAGE; WB; ELISA; IP.
Stability	The thermal stability is described by the loss rate of the target protein. The loss rate was determined by accelerated thermal degradation test, that is, incubate the protein at 37°C for 48h, and no obvious degradation and precipitation were observed. (Referring from China Biological Products Standard, which was calculated by the Arrhenius equation.) The loss of this protein is less than 5% within the expiration date under appropriate storage condition.
Storage	Avoid repeated freeze/thaw cycles. Store at 2-8°C for one month. Aliquot and store at -80°C for 12 months.
Storage buffer	Supplied as lyophilized form in PBS, pH7.4, containing 5% sucrose, 0.01% sarcosyl.
Reconstitution	Reconstitute in sterile PBS, pH7.2-pH7.4.

GENE INFORMATION

Gene Name	LILRB1 leukocyte immunoglobulin like receptor B1 [Homo sapiens (human)]
Official Symbol	LILRB1
Synonyms	ILT2; LIR1; MIR7; PIRB; CD85J; ILT-2; LIR-1; MIR-7; PIR-B; CD85 antigen-like family member J; Ig-like transcript 2; leukocyte Ig-like receptor B1; leukocyte immunoglobulin-like receptor subfamily B member 1 soluble isoform; leukocyte immunoglobulin-like; receptor, subfamily B (with TM and ITIM domains), member 1; monocyte/macrophage immunoglobulin-like receptor 7; myeloid inhibitory receptor 7;

 Tel: 1-631-559-9269 1-516-512-3133

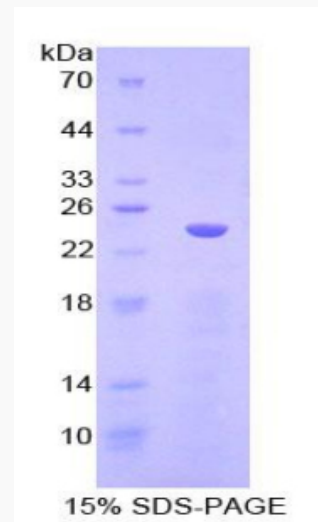
 Email: info@creative-biomart.com  Fax: 1-631-938-8127

 45-1 Ramsey Road, Shirley, NY 11967, USA

leukocyte immunoglobulin-like receptor subfamily B member 1

Gene ID	10859
mRNA Refseq	NM_001081637.2
Protein Refseq	NP_001075106.2
UniProt ID	Q8NHL6

SDS-PAGE



 Tel: 1-631-559-9269 1-516-512-3133

 Email: info@creative-biomart.com  Fax: 1-631-938-8127

 45-1 Ramsey Road, Shirley, NY 11967, USA