

Recombinant Human LILRB3 protein, His-Avi-tagged

Cat. No. LILRB3-522H Lot. No. (See product label)

SPECIFICATION

Product Overview	Recombinant Human LILRB3 protein(O75022-1)(Gly24-Glu443), fused with C-terminal His and Avi tag, was expressed in HEK293.
Species	Human
Source	HEK293
ProteinLength	Gly24-Glu443
Tag	C-His-Avi
Form	Lyophilized from 0.22µm filtered solution in PBS (pH 7.4). Normally 5% trehalose is added as protectant before lyophilization.
Bio-activity	Immobilized Human LILRB3, His Tag at 5µg/ml (100µl/well) on the plate. Dose response curve for Anti-LILRB3 Antibody, hFc Tag with the EC50 of 12.5ng/ml determined by ELISA.
Molecular Mass	The protein has a predicted MW of 50 kDa. Due to glycosylation, the protein migrates to 60-72 kDa based on Tris-Bis PAGE result.
Endotoxin	Less than 1EU per µg by the LAL method.
Purity	> 95% as determined by Tris-Bis PAGE; > 95% as determined by HPLC

 Tel: 1-631-559-9269 1-516-512-3133

 Email: info@creative-biomart.com  Fax: 1-631-938-8127

 45-1 Ramsey Road, Shirley, NY 11967, USA

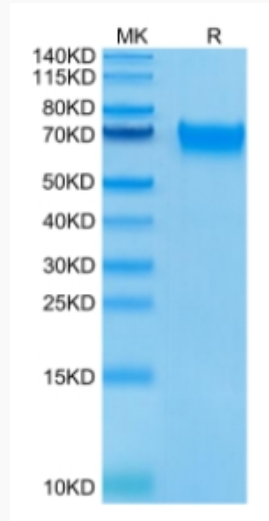
Storage	Reconstituted protein stable at -80°C for 12 months, 4°C for 1 week. Use a manual defrost freezer and avoid repeated freeze-thaw cycles.
Reconstitution	Centrifuge tubes before opening. Reconstituting to a concentration more than 100 µg/ml is recommended. Dissolve the lyophilized protein in distilled water.
GENE INFORMATION	
Gene Name	LILRB3 leukocyte immunoglobulin-like receptor, subfamily B (with TM and ITIM domains), member 3 [Homo sapiens]
Official Symbol	LILRB3
Synonyms	LILRB3; leukocyte immunoglobulin-like receptor, subfamily B (with TM and ITIM domains), member 3; leukocyte immunoglobulin-like receptor subfamily B member 3; CD85a; HL9; ILT5; LIR 3; LIR3; immunoglobulin-like transcript 5; monocyte inhibitory receptor HL9; CD85 antigen-like family member A; leukocyte immunoglobulin-like receptor 3; PIRB; CD85A; ILT-5; LIR-3; MGC138403;
Gene ID	11025
mRNA Refseq	NM_001081450
Protein Refseq	NP_001074919
MIM	604820
UniProt ID	O75022

 Tel: 1-631-559-9269 1-516-512-3133

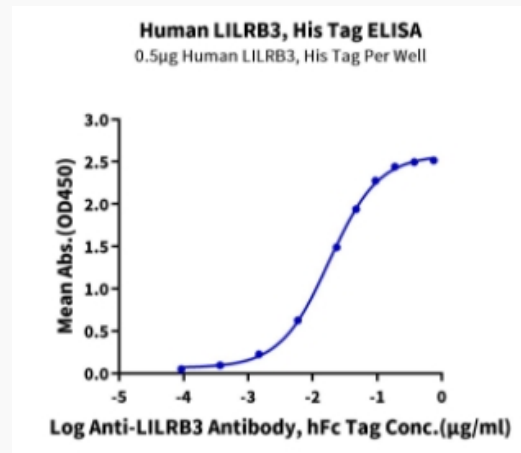
 Email: info@creative-biomart.com  Fax: 1-631-938-8127

 45-1 Ramsey Road, Shirley, NY 11967, USA

Tris-Bis PAGE



ELISA Data



 Tel: 1-631-559-9269 1-516-512-3133

 Email: info@creative-biomart.com  Fax: 1-631-938-8127

 45-1 Ramsey Road, Shirley, NY 11967, USA