

Active Recombinant Human LILRB3 Protein, His-Avi-tagged, Biotinylated

Cat. No. LILRB3-522HB Lot. No. (See product label)

SPECIFICATION

Product Overview	Biotinylated Recombinant Human LILRB3 Protein(O75022-1)(Gly24-Glu443) is expressed from HEK293 with His tag and Avi tag at the C-terminal.
Species	Human
Source	HEK293
ProteinLength	Gly24-Glu443
Form	Lyophilized from 0.22µm filtered solution in PBS (pH 7.4). Normally 5% trehalose is added as protectant before lyophilization.
Bio-activity	Immobilized Biotinylated Human LILRB3, His Tag at 2µg/ml (100µl/well) on the streptavidin precoated plate (5µg/ml). Dose response curve for Anti-LILRB3 Antibody, hFc Tag with the EC50 of 3.6ng/ml determined by ELISA.
Molecular Mass	The protein has a predicted MW of 50 kDa. Due to glycosylation, the protein migrates to 60-72 kDa based on Tris-Bis PAGE result.
Endotoxin	Less than 1EU per µg by the LAL method.
Purity	> 95% as determined by Tris-Bis PAGE > 95% as determined by HPLC

 Tel: 1-631-559-9269 1-516-512-3133

 Email: info@creative-biomart.com  Fax: 1-631-938-8127

 45-1 Ramsey Road, Shirley, NY 11967, USA

Storage

-20 to -80°C for 12 months as supplied from date of receipt.
 -20 to -80°C for 3-6 months in unopened state after reconstitution.
 2-8°C for 2-7 days after reconstitution.
 Recommend to aliquot the protein into smaller quantities for optimal storage. Please avoid freeze-thaw cycles.

Reconstitution

Centrifuge tubes before opening. Reconstituting to a concentration more than 100 µg/ml is recommended (usually we use 1mg/ml solution for lyophilization). Dissolve the lyophilized protein in distilled water.

Conjugation Biotin

GENE INFORMATION

Gene Name LILRB3 leukocyte immunoglobulin like receptor B3 [Homo sapiens (human)]

Official Symbol LILRB3

Synonyms

HL9; ILT5; LIR3; PIRB; CD85A; ILT-5; LIR-3; PIR-B; LILRA6; CD85 antigen-like family member A; immunoglobulin-like transcript 5; leukocyte Ig-like receptor B3; leukocyte immunoglobulin-like receptor, subfamily A (with TM domain), member 6; leukocyte; immunoglobulin-like receptor, subfamily B (with TM and ITIM domains), member 3; monocyte inhibitory receptor HL9; leukocyte immunoglobulin-like receptor subfamily B member 3

Gene ID 11025

mRNA Refseq NM_001081450

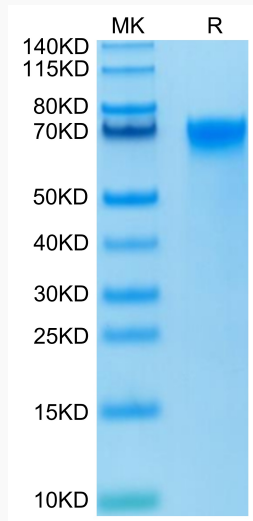
Protein Refseq NP_001074919

 Tel: 1-631-559-9269 1-516-512-3133

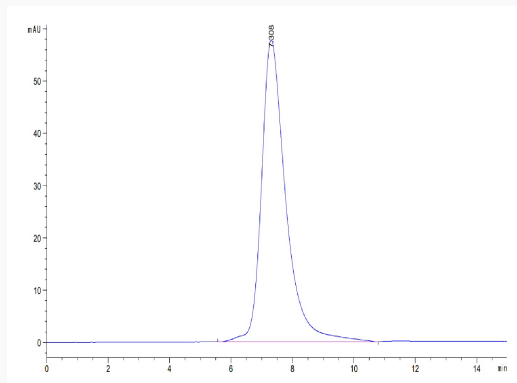
 Email: info@creative-biomart.com  Fax: 1-631-938-8127

 45-1 Ramsey Road, Shirley, NY 11967, USA

Tris-Bis PAGE



SEC-HPLC

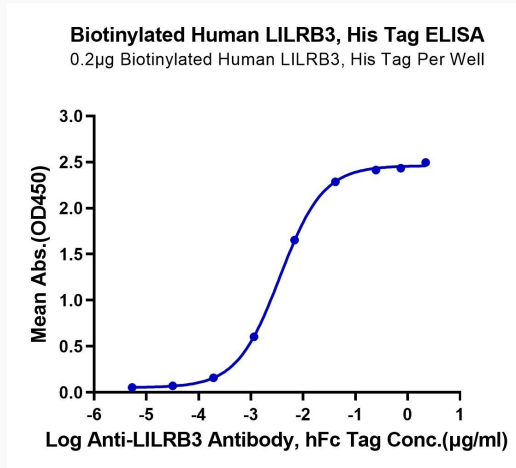


 Tel: 1-631-559-9269 1-516-512-3133

 Email: info@creative-biomart.com  Fax: 1-631-938-8127

 45-1 Ramsey Road, Shirley, NY 11967, USA

ELISA Data



 Tel: 1-631-559-9269 1-516-512-3133

 Email: info@creative-biomart.com  Fax: 1-631-938-8127

 45-1 Ramsey Road, Shirley, NY 11967, USA