

Recombinant Rhesus monkey LILRB4 Protein, His-tagged

Cat. No. LILRB4-32R Lot. No. (See product label)

SPECIFICATION

Product Overview	Recombinant Rhesus monkey LILRB4 Protein, fused to His-tag, was expressed in HEK293.
Species	Rhesus macaque
Source	HEK293
Description	leukocyte immunoglobulin like receptor B4
Form	PBS, pH 7.4.
Molecular Mass	26.36 kDa
AA Sequence	GPLPKPTIWAEPGSVISWGSPVTIWCQGTLDQAQEYYLDKEGSPAPWDTQNPLEPRN KAKFSIPSMTQHYAGRYRCYYHSHPDWSESDSDPLDLVMTGAYSKPILSVLPSPLVTS GESVTLLCQSQSPMDTFLLFKEGAAHPLPRLRSQHGAQLHWAEFPMGPVTSVHGG TYRCISSRSFSHYLLSRPSPDVELTVLGSLESPSPSPTRSISAAGPEDQSLMPTGSD PQSGLRHHHHHHHH
Purity	90%
Storage	Store it under sterile conditions at -20 to -80 centigrade. It is recommended that the protein be aliquoted for optimal storage. Avoid repeated freeze-thaw cycles.
Concentration	0.27mg/ml

 Tel: 1-631-559-9269 1-516-512-3133

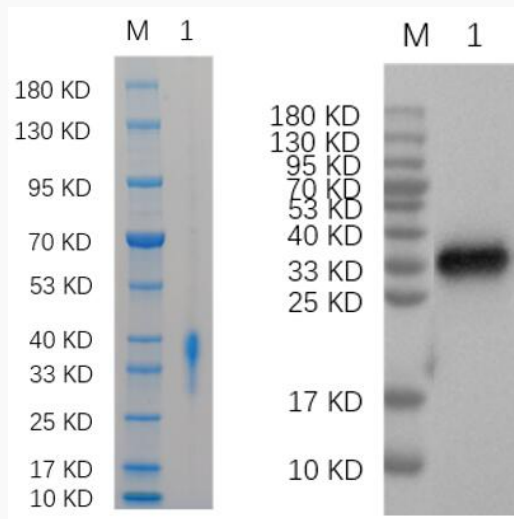
 Email: info@creative-biomart.com  Fax: 1-631-938-8127

 45-1 Ramsey Road, Shirley, NY 11967, USA

GENE INFORMATION

Gene Name	LILRB4 leukocyte immunoglobulin like receptor B4 [<i>Macaca mulatta</i> (Rhesus monkey)]
Official Symbol	LILRB4
Synonyms	LILRBC
Gene ID	692336
mRNA Refseq	NM_001040676
Protein Refseq	NP_001035766
UniProt ID	A0A5F7ZGE5

SDS-PAGE



Reducing 12% SDS-PAGE and WB analysis profile of purified LILRB4.

Tel: 1-631-559-9269 1-516-512-3133

Email: info@creative-biomart.com Fax: 1-631-938-8127

45-1 Ramsey Road, Shirley, NY 11967, USA