

## Recombinant Human LILRB5 protein, Fc & Avi-tagged, Biotinylated

Cat. No. LILRB5-0624H Lot. No. (See product label)

### SPECIFICATION

<b>Product Overview</b>	Biotinylated Human LILRB5 / CD85c / LIR-8, Fc Tag is expressed from human 293 cells (HEK293). It contains AA Gly 24 - Gly 458 (Accession # O75023-1). Biotinylation of this product is performed using Avitag technology. Briefly, the single lysine residue in the Avitag is enzymatically labeled with biotin. The biotin to protein ratio is 0.5-1 as determined by the HABA assay.
<b>Species</b>	Human
<b>Source</b>	HEK293
<b>ProteinLength</b>	Gly 24 - Gly 458
<b>Description</b>	Leukocyte immunoglobulin-like receptor subfamily B member 5 (LILRB5), also known as CD85c and LIR-8, belongs to the leukocyte immunoglobulin-like receptor (LIR) family of transmembrane glycoproteins that negatively regulate immune cell activation. Several other LIR subfamily B receptors are expressed on immune cells where they bind to MHC class I molecules on antigen-presenting cells and inhibit stimulation of an immune response.
<b>Predicted N Terminal</b>	Gly 24
<b>Form</b>	Lyophilized from 0.22 µm filtered solution in 50 mM Tris, 100 mM Glycine, pH7.5, 10% trehalose.

 Tel: 1-631-559-9269 1-516-512-3133

 Email: [info@creative-biomart.com](mailto:info@creative-biomart.com)  Fax: 1-631-938-8127

 45-1 Ramsey Road, Shirley, NY 11967, USA

<b>Molecular Mass</b>	The protein has a calculated MW of 75.8 kDa. The protein migrates as 90-105 kDa under reducing (R) condition (SDS-PAGE) due to glycosylation.
<b>Endotoxin</b>	Less than 1.0 EU per µg by the LAL method.
<b>Purity</b>	>95% as determined by SDS-PAGE.
<b>Storage</b>	For long term storage, the product should be stored at lyophilized state at -20°C or lower. Please avoid repeated freeze-thaw cycles. No activity loss is observed after storage at: 4-8°C for 12 months in lyophilized state; -70°C for 3 months under sterile conditions after reconstitution.
<b>Reconstitution</b>	It is recommended that sterile water be added to the vial to prepare a stock solution of 0.2 ug/ul. Centrifuge the vial at 4°C before opening to recover the entire contents.
<b>Shipping</b>	Powder,RT
<b>Conjugation</b>	Biotin

## GENE INFORMATION

<b>Gene Name</b>	LILRB5 leukocyte immunoglobulin like receptor B5 [ Homo sapiens (human) ]
<b>Official Symbol</b>	LILRB5
<b>Synonyms</b>	LIR8; CD85C; LIR-8; CD85 antigen-like family member C; leucocyte Ig-like receptor B5; leukocyte immunoglobulin-like receptor 8; leukocyte immunoglobulin-like receptor, subfamily B (with TM and ITIM domains), member 5; leukocyte immunoglobulin-like receptor subfamily B member 5
<b>Gene ID</b>	10990

 Tel: 1-631-559-9269 1-516-512-3133

 Email: [info@creative-biomart.com](mailto:info@creative-biomart.com)  Fax: 1-631-938-8127

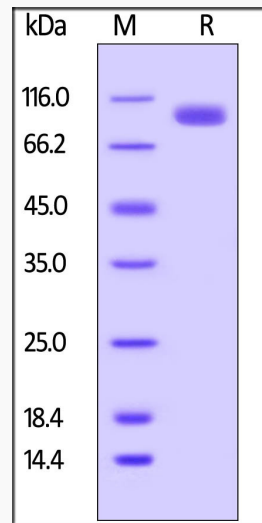
 45-1 Ramsey Road, Shirley, NY 11967, USA

mRNA Refseq [NM\\_001081442.2](#)

Protein Refseq [NP\\_001074911.1](#)

UniProt ID [O75023](#)

#### SDS-PAGE



Biotinylated Human LILRB5 / CD85c / LIR-8, Fc Tag on SDS-PAGE under reducing (R) condition. The gel was stained overnight with Coomassie Blue. The purity of the protein is greater than 95%.

Tel: 1-631-559-9269 1-516-512-3133

Email: [info@creative-biomart.com](mailto:info@creative-biomart.com) Fax: 1-631-938-8127

45-1 Ramsey Road, Shirley, NY 11967, USA