

Recombinant Human LIMCH1 Protein, Myc/DDK-tagged, C13 and N15-labeled

Cat. No. LIMCH1-4374H Lot. No. (See product label)

SPECIFICATION

Product Overview	LIMCH1 MS Standard C13 and N15-labeled recombinant protein (NP_055803) with a C-terminal MYC/DDK tag, was expressed in HEK293 cells.
Species	Human
Source	HEK293
Description	LIMCH1 (LIM And Calponin Homology Domains 1) is a Protein Coding gene. Gene Ontology (GO) annotations related to this gene include actin binding. An important paralog of this gene is LMO7.
Molecular Mass	121.7 kDa
AA Sequence	<p>MACPALGLEALQPLQPEPPPEPAFSEAQKWIEQVTGRSFGDKDFRTGLENGILLCEL LNAIKPGLVKKINRLPTPIAGLDNIIFLRGCKELGLKESQLFDPSDLQDTSNRVTVKSL DYSRKLKNVLVTIYWLGKAANSCTSYSGTTLNLKEFEGLLAQMQRKDTDDIESPKRSIR DSGYIDCWDSERSDSLSPPRHGRDDSFDSLDSFGSRSRQTSPDPVVLRGSSDGRG SDSESDLPHRKLDPVKKDDMSARRTSHGEPKSAVPFNQYLPNKSNTAYVPAPLRK KKAEREEYRKSWSSTATSPGGERPFRYGPRTPVSDDAESTSMFDMRCEEEAAVQP HSRARQEQLQLINNQLREEDDKWQDDLARWKSRRRSVSQDLIKKEERKKMEKLL AGEDGTSERRKSIKTYREIVQEKERRERELHEAYKNARSQEEAEGILQQYIERFTISE AVLERLEMPKILERSHSTEPNLSSFLNDPNPMKYLRQQSLPPPFTATVETTIARASV LDTSMSAGSGSPSKTVTPKAVPMLTPKPYSQPKNSQDVLKTFKVDGKVSUNGETVH</p>

 Tel: 1-631-559-9269 1-516-512-3133

 Email: info@creative-biomart.com  Fax: 1-631-938-8127

 45-1 Ramsey Road, Shirley, NY 11967, USA

REEEKERECPTVAPAHSLTKSQMFEGVARVHGSPLELKQDNGSIEINIKKPNSVPQE
 LAATTEKTEPNSQEDKNDGGKSRKGNIELASSEPHFTTTVTRCSPTVAFVEFPSSP
 QLKNDVSEEKQKKPENEMSGKVELVLSQKVVKPKSPEPEATLTFPFLDKMPEANQ
 LHLPLNLSQVDSPSSEKSPVTTTPQKFWAWDPEEERRRQEKWQQEQERLLQERY
 QKEQDKLKEEWEKAQKEVEEEEERRYYEEERKIIEDTVVPFTVSSSSADQLSTSSSMT
 EGSGMTNKIDLGNCQDEKQDRRWKKSFGDDSDLLLKTRESDRLEEKGSLTEGAL
 AHSGNPVSKGVHEDHQLDTEAGAPHCGTNPQLAQDPSQNQQTSNPTHSSSEDVKP
 KTLPLDKSINHQIESPSERRKKS PREHFQAGPFSPCSPTPPGQSPNRSISGKKLCSS
 CGLPLGKGAAMIIETLNLYFHIQCFCRGICKGQLGDAVSGTDVIRIRNGLLNCNDCYM
 RSRGAGQPTTLTRTRPLEQKLISEEDLAANDILDYKDDDDKV

Purity > 80% as determined by SDS-PAGE and Coomassie blue staining

Stability Stable for 3 months from receipt of products under proper storage and handling conditions.

Storage Store at -80 centigrade. Avoid repeated freeze-thaw cycles.

Concentration 50 µg/mL as determined by BCA

Storage Buffer 100 mM glycine, 25 mM Tris-HCl, pH 7.3.

GENE INFORMATION

Gene Name LIMCH1 LIM and calponin homology domains 1 [Homo sapiens (human)]

Official Symbol LIMCH1

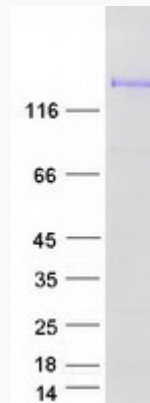
Synonyms LIMCH1; LIM and calponin homology domains 1; LIM and calponin homology domains-containing protein 1; DKFZP686A01247; LIMCH1A; LMO7B; MGC72127; DKFZp434I0312; DKFZp686B2470; DKFZp686G2094; DKFZp781C1754;

 Tel: 1-631-559-9269 1-516-512-3133

 Email: info@creative-biomart.com  Fax: 1-631-938-8127

 45-1 Ramsey Road, Shirley, NY 11967, USA

DKFZp781I1455; DKFZp686A01247; DKFZp686G18243;

Gene ID 22998**mRNA Refseq** NM_014988**Protein Refseq** NP_055803**MIM** 617750**UniProt ID** Q9UPQ0**SDS-PAGE** Tel: 1-631-559-9269 1-516-512-3133 Email: info@creative-biomart.com  Fax: 1-631-938-8127 45-1 Ramsey Road, Shirley, NY 11967, USA