

# Recombinant Human LIMD1 Protein, Myc/DDK-tagged, C13 and N15-labeled

Cat. No. LIMD1-4831H Lot. No. (See product label)

## SPECIFICATION

### Product Overview

LIMD1 MS Standard C13 and N15-labeled recombinant protein (NP\_055055) with a C-terminal MYC/DDK tag, was expressed in HEK293 cells.

### Species

Human

### Source

HEK293

### Description

LIMD1 (LIM Domains Containing 1) is a Protein Coding gene. Diseases associated with LIMD1 include Wilson-Turner X-Linked Mental Retardation Syndrome and Lung Cancer. Among its related pathways are Tyrosine Kinases / Adaptors and Hippo signaling pathway - multiple species. Gene Ontology (GO) annotations related to this gene include transcription corepressor activity. An important paralog of this gene is WTIP.

### Molecular Mass

72 kDa

### AA Sequence

MDKYDDLGLEASKFIEDLNMYEASKDGLFRVDKGAGNNPEFEETRRVFATKMAKIHL  
 QQQQQQLLQEETLPRGSRGPVNGGGRLGPQARWEVVGSKLTVDGAAKPPPLAAS  
 GAPGAVTTLAAGQPPYPPQEQRSRPYLHGTRHGSQDCGSRESLATSEMSAFHQ  
 GPCEDPSCSLTHGDYYDNLSLSPKWGDKPGVSPSIGLSVSGSWPSSPGSDPPLPK  
 PCGDHPLNHRQLSLSSSRSSSEGLGGQNSGIGGRSSEKPTGLWSTASSQRVSPGL  
 PSPNLENGAPAVGPVQPRTPSVSAPLALSCPRQGGLPRSNSGLGGEVSGVMKPN  
 VDPQPWFQDGPKSYLSSSAPSSSPAGLDGSQQGAVPGLGPKPGCTDLGTGPKLSP

 Tel: 1-631-559-9269 1-516-512-3133

 Email: [info@creative-biomart.com](mailto:info@creative-biomart.com)  Fax: 1-631-938-8127

 45-1 Ramsey Road, Shirley, NY 11967, USA

TSLVHPVMSTLPELSCKEGPLGWSSDGLGSVLLDSPSSPRVRLPCQPLVPGPELR  
 PSAAELKLEALTQRLEREMDAHPKADYFGACVKCSKGVFGAGQACQAMGNLYHDT  
 CFTCAACSRKLRGKAFYFVNGKVFCEEDFLYSGFQQSADRCFLCGHLIMDMILQAL  
 GKSYPHGPCFRCVICNECLDGVFPTVDSENKIYCVRDYHKVLAPKCAACGLPILPPEG  
 SDETIRVVSMRDRDYHVECYHCEDCGLELNDEDGHRCPLEDHLFCHSCHVKRLEK  
 RPSSTALHQHHFTRTRPLEQKLISEEDLAANDILDYKDDDDKV

**Purity** > 80% as determined by SDS-PAGE and Coomassie blue staining

**Stability** Stable for 3 months from receipt of products under proper storage and handling conditions.

**Storage** Store at -80 centigrade. Avoid repeated freeze-thaw cycles.

**Concentration** 50 µg/mL as determined by BCA

**Storage Buffer** 100 mM glycine, 25 mM Tris-HCl, pH 7.3.

## GENE INFORMATION

**Gene Name** [LIMD1 LIM domains containing 1 \[ Homo sapiens \(human\) \]](#)

**Official Symbol** [LIMD1](#)

**Synonyms** LIMD1; LIM domains containing 1; LIM domain-containing protein 1;

**Gene ID** [8994](#)

**mRNA Refseq** [NM\\_014240](#)

**Protein Refseq** [NP\\_055055](#)

 Tel: 1-631-559-9269 1-516-512-3133

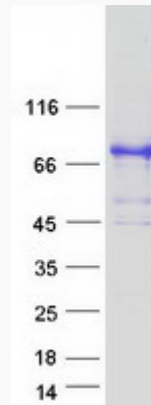
 Email: [info@creative-biomart.com](mailto:info@creative-biomart.com)  Fax: 1-631-938-8127

 45-1 Ramsey Road, Shirley, NY 11967, USA

MIM 604543

UniProt ID Q9UGP4

SDS-PAGE



 Tel: 1-631-559-9269 1-516-512-3133

 Email: [info@creative-biomart.com](mailto:info@creative-biomart.com)  Fax: 1-631-938-8127

 45-1 Ramsey Road, Shirley, NY 11967, USA