

Recombinant Human LIMK1 protein, GST-tagged

Cat. No. LIMK1-321H Lot. No. (See product label)

SPECIFICATION

Product Overview	Recombinant Human LIMK1(1 a.a. - 647 a.a.) fused with GST tag at N-terminal was expressed in Wheat Germ.
Species	Human
Source	Wheat Germ
ProteinLength	1-647 a.a.
Form	50 mM Tris-HCl, 10 mM reduced Glutathione, pH=8.0 in the elution buffer.
Molecular Mass	96.8 kDa
AA Sequence	<p>MRLTLLCCTWREERMGEEGSELPVCASCGQRIYDGQYLQALNADWHADCFRCCD CSASLSHQYYEKDGLFCKKDYWARYGESCHGCSEQITKGLVMVAGELKYHPECFI CLTCGTFIGDGDYTLVEHSKLYCGHCYYQTVVTPVIEQILPDSPGSHLPHTVTLVSIP ASSHGKRGLSVSIDPPHGPPGCGTEHSHTVRVQGVDPGCMSPDVKNSIHVGDRIE INGTPIRNVPLDEIDLLIQETSRLQLTLEHDPHDTLGHGLGPETSPLSSPAYTPSGEA GSSARQKPVLRSIDRSPGAGSLGSPASQRKDLGRSESLRVVCRPHRIFRPSDLIH GEVLGKGCFGQAIKVTHRETGEVMVMKELIRFDEETQRTFLKEVKVMRCLEHPNVL KFIGVLYKDKRLNFITEYIKGGTLRGIKSMDSQYPWSQRVVSFAKDIASGMAYLHSMNI IHRDLNSHNCLVRENKNVVVADFGLARLMVDEKTQPEGLRSLKKPDRKKRYTVVGN PYWMAPEMINGRSYDEKVDVFSFGIVLCEIIGRVNADPDYLPRTMDFGLNVRGFLDR YCPPNCPPSFFPITVRCCDLDPKRPFSVKLEHWLETLRMHLAGHLPLGPQLEQLD RGFWETYRRGESGLPAHPEVPD</p>

 Tel: 1-631-559-9269 1-516-512-3133

 Email: info@creative-biomart.com  Fax: 1-631-938-8127

 45-1 Ramsey Road, Shirley, NY 11967, USA

Notes	Best use within three months from the date of receipt of this protein.
Storage	Store at -80 centigrade. Aliquot to avoid repeated freezing and thawing.
GENE INFORMATION	
Gene Name	LIMK1 LIM domain kinase 1 [Homo sapiens]
Official Symbol	LIMK1
Synonyms	LIMK1; LIM domain kinase 1; LIMK; LIM motif-containing protein kinase; LIMK-1;
Gene ID	3984
mRNA Refseq	NM_002314
Protein Refseq	NP_002305
MIM	601329
UniProt ID	P53667
Chromosome Location	7q11.23
Pathway	Axon guidance, organism-specific biosystem; Axon guidance, conserved biosystem; Axon guidance, organism-specific biosystem; Axon guidance, organism-specific biosystem; CDC42 signaling events, organism-specific biosystem; CXCR4-mediated signaling events, organism-specific biosystem; Caspase cascade in apoptosis, organism-specific biosystem;
Function	ATP binding; heat shock protein binding; metal ion binding; nucleotide binding;

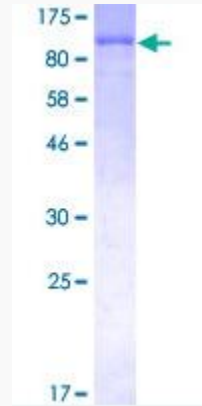
 Tel: 1-631-559-9269 1-516-512-3133

 Email: info@creative-biomart.com  Fax: 1-631-938-8127

 45-1 Ramsey Road, Shirley, NY 11967, USA



protein binding; protein kinase activity; protein serine/threonine kinase activity; zinc ion binding;



Tel: 1-631-559-9269 1-516-512-3133

Email: info@creative-biomart.com Fax: 1-631-938-8127

45-1 Ramsey Road, Shirley, NY 11967, USA