

## Recombinant Human LIMK2 Protein, Myc/DDK-tagged, C13 and N15-labeled

**Cat. No.** LIMK2-5545H    **Lot. No.** (See product label)

### SPECIFICATION

#### Product Overview

LIMK2 MS Standard C13 and N15-labeled recombinant protein (NP\_057952) with a C-terminal MYC/DDK tag, was expressed in HEK293 cells.

#### Species

Human

#### Source

HEK293

#### Description

There are approximately 40 known eukaryotic LIM proteins, so named for the LIM domains they contain. LIM domains are highly conserved cysteine-rich structures containing 2 zinc fingers. Although zinc fingers usually function by binding to DNA or RNA, the LIM motif probably mediates protein-protein interactions. LIM kinase-1 and LIM kinase-2 belong to a small subfamily with a unique combination of 2 N-terminal LIM motifs and a C-terminal protein kinase domain. The protein encoded by this gene is phosphorylated and activated by ROCK, a downstream effector of Rho, and the encoded protein, in turn, phosphorylates cofilin, inhibiting its actin-depolymerizing activity. It is thought that this pathway contributes to Rho-induced reorganization of the actin cytoskeleton. At least three transcript variants encoding different isoforms have been found for this gene.

#### Molecular Mass

69.7 kDa

#### AA Sequence

MGSYLSVPAYFTSRDLFRCSECQDSL TNWYYEKDGKLYCPKDYWGKFGFCHGCS  
LLMTGPFMVAGEFKYHPECFACMSCKVIIEDGDAYALVQHATLYCGKCHNEVVLAP

 Tel: 1-631-559-9269    1-516-512-3133

 Email: [info@creative-biomart.com](mailto:info@creative-biomart.com)     Fax: 1-631-938-8127

 45-1 Ramsey Road, Shirley, NY 11967, USA

MFERLSTESVQEQLPYSVTLISMPATTEGRRGFSVSVESACSNYATTVQVKEVNRM  
 HISPNNRNAIHPGDRILEINGTPVRTLRLVEEVEDAISQTSQTLQLLIEHDPVSQRDLQL  
 RLEARLAPHMQNAGHPHALSTLDTKENLEGLRRRSLRRSNSISKSPGPSSPKEPLL  
 FSRDISRSESLRCSSSYSQQIFRPCDLIHGEVLGKGGFFGQAIKVTHKATGKVMVMKE  
 LIRCDEETQKTFLTEVKVMRSLDHPNVLKFIVGLYKDKKLNLLTEYIEGGTLKDFLRSM  
 DPFPWQQKVRFAKGIASGMAYLHSMCIHRDLNSHNCLIKLDKTVVADFGLSRLIVE  
 ERKRAPMEKATTKRTRLRKNDRKKRYTVVGNPYWMAPEMLNGKSYDETVDIFSFGI  
 VLCEIIGQVYADPDCLPRTLDFGLNVKLFWEKVFVPTDCPPAFFPLAAICCRLEPESRP  
 AFSKLEDSFEALSLEYLGEGLIPLPAELEELDHTVSMQYGLTRDSPPTRTRPLEQKLIS  
 EEDLAANDILDYKDDDDKV

**Purity** > 80% as determined by SDS-PAGE and Coomassie blue staining

**Stability** Stable for 3 months from receipt of products under proper storage and handling conditions.

**Storage** Store at -80 centigrade. Avoid repeated freeze-thaw cycles.

**Concentration** 50 µg/mL as determined by BCA

**Storage Buffer** 100 mM glycine, 25 mM Tris-HCl, pH 7.3.

## GENE INFORMATION

**Gene Name** LIMK2 LIM domain kinase 2 [ Homo sapiens (human) ]

**Official Symbol** LIMK2

**Synonyms** LIMK2; LIM domain kinase 2; LIM domain kinase 2; EC 2.7.11.1

**Gene ID** 3985

 Tel: 1-631-559-9269 1-516-512-3133

 Email: [info@creative-biomart.com](mailto:info@creative-biomart.com)  Fax: 1-631-938-8127

 45-1 Ramsey Road, Shirley, NY 11967, USA

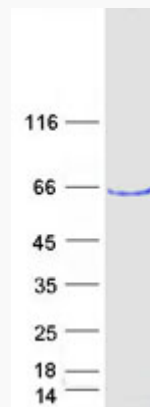
mRNA Refseq [NM\\_016733](#)

Protein Refseq [NP\\_057952](#)

MIM [601988](#)

UniProt ID [P53671](#)

SDS-PAGE



 Tel: 1-631-559-9269 1-516-512-3133

 Email: [info@creative-biomart.com](mailto:info@creative-biomart.com)  Fax: 1-631-938-8127

 45-1 Ramsey Road, Shirley, NY 11967, USA