

## Recombinant Human LIN28A Protein (2-209), N-FLAG/Avi-tagged, Biotined

Cat. No. LIN28A-08H Lot. No. (See product label)

### SPECIFICATION

**Product Overview** Recombinant biotined human LIN28A (Lin-28 Homolog A) encompassing amino acids 2-209. The construct contains an N-terminal FLAG-tag followed by an Avi-Tag™ expressed in a HEK293 cell expression system.. The recombinant protein was enzymatically biotinylated using the Avi-Tag™ and affinity purified.

**Species** Human

**Source** HEK293

**ProteinLength** 2-209

**Description** This gene encodes a LIN-28 family RNA-binding protein that acts as a posttranscriptional regulator of genes involved in developmental timing and self-renewal in embryonic stem cells. The encoded protein functions through direct interaction with target mRNAs and by disrupting the maturation of certain miRNAs involved in embryonic development. This protein prevents the terminal processing of the LET7 family of microRNAs which are major regulators of cellular growth and differentiation. Aberrant expression of this gene is associated with cancer progression in multiple tissues.

**Form** Aqueous buffer solution

**Molecular Mass** 26 kDa

 Tel: 1-631-559-9269 1-516-512-3133

 Email: [info@creative-biomart.com](mailto:info@creative-biomart.com)  Fax: 1-631-938-8127

 45-1 Ramsey Road, Shirley, NY 11967, USA

<b>Purity</b>	≥50%
<b>Usage</b>	Thaw on ice and gently mix prior to use. DO NOT VORTEX. Perform a quick spin before opening. Aliquot into small volumes and flash freeze for long term storage. Avoid multiple freeze/thaw cycles.
<b>Storage</b>	At least 6 months at -80 centigrade
<b>Storage Buffer</b>	40 mM Tris-HCl, pH 8.0, 110 mM NaCl, 2.2 mM KCl, 3mM DTT, 20% glycerol, and variable FLAG peptide.
<b>Shipping</b>	At -80 centigrade
<b>Warning</b>	Avoid freeze/thaw cycles.
<b>Conjugation</b>	Biotin

## GENE INFORMATION

<b>Gene Name</b>	LIN28A lin-28 homolog A [ Homo sapiens (human) ]
<b>Official Symbol</b>	LIN28A
<b>Synonyms</b>	LIN28A; lin-28 homolog A; CSDD1; LIN28; LIN-28; ZCCHC1; lin-28A; protein lin-28 homolog A; RNA-binding protein LIN-28; zinc finger CCHC domain-containing protein 1; zinc finger, CCHC domain containing 1
<b>Gene ID</b>	79727
<b>mRNA Refseq</b>	NM_024674

 Tel: 1-631-559-9269 1-516-512-3133

 Email: [info@creative-biomart.com](mailto:info@creative-biomart.com)  Fax: 1-631-938-8127

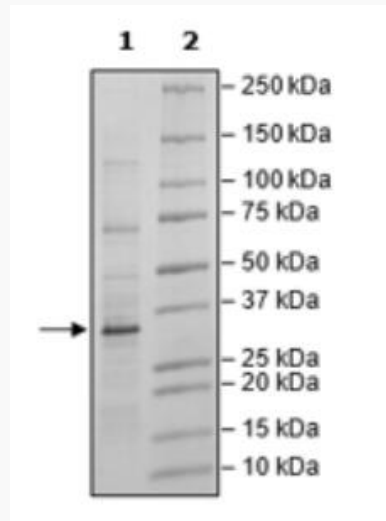
 45-1 Ramsey Road, Shirley, NY 11967, USA

**Protein Refseq** NP\_078950

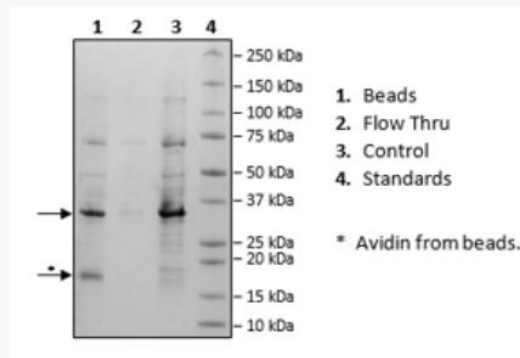
**MIM** 611043

**UniProt ID** Q9H9Z2

**SDS-PAGE**



**Biotin-Avidin  
Pulldown**



Tel: 1-631-559-9269 1-516-512-3133

Email: [info@creative-biomart.com](mailto:info@creative-biomart.com) Fax: 1-631-938-8127

45-1 Ramsey Road, Shirley, NY 11967, USA