

Recombinant Full Length Human LIN28A Protein, C-Flag-tagged

Cat. No. LIN28A-1405HFL **Lot. No.** (See product label)

SPECIFICATION

Product Overview	Recombinant Full Length Human LIN28A Protein, fused to Flag-tag at C-terminus, was expressed in Mammalian cells.
Species	Human
Source	Mammalian Cells
Description	This gene encodes a LIN-28 family RNA-binding protein that acts as a posttranscriptional regulator of genes involved in developmental timing and self-renewal in embryonic stem cells. The encoded protein functions through direct interaction with target mRNAs and by disrupting the maturation of certain miRNAs involved in embryonic development. This protein prevents the terminal processing of the LET7 family of microRNAs which are major regulators of cellular growth and differentiation. Aberrant expression of this gene is associated with cancer progression in multiple tissues.
Form	25 mM Tris HCl, pH 7.3, 100 mM glycine, 10% glycerol.
Molecular Mass	22.6 kDa
AA Sequence	MGSVSNQQFAGGCCAKAAEEAPEEAPEDAARAADPEQLLHGAGICKWFNVRMGFG FLSMTARAGVALDPPV DVFVHQSKLHMEGFRSLKEGEAVEFTFKKSAKGLESIRVT GPGGVFCIGSERRPKGKSMQKRRSKGDRCY NCGGLDHHAKECKLPPQPCKKCHFC QSISHMVASCPLKAQQGPSAQQKPTYFREEEEEEIHSPTLLPEAQN

 Tel: 1-631-559-9269 1-516-512-3133

 Email: info@creative-biomart.com  Fax: 1-631-938-8127

 45-1 Ramsey Road, Shirley, NY 11967, USA

TRTRPLEQKLISEEDLAANDILDYKDDDDKV

Purity > 80% as determined by SDS-PAGE and Coomassie blue staining.

Stability Stable for 12 months from the date of receipt of the product under proper storage and handling conditions. Avoid repeated freeze-thaw cycles.

Storage Store at -80 centigrade.

Concentration >50 ug/mL as determined by microplate BCA method.

Preparation Recombinant protein was captured through anti-DDK affinity column followed by conventional chromatography steps.

Protein Families Transcription Factors

Full Length Full L.

GENE INFORMATION

Gene Name [LIN28A lin-28 homolog A \[Homo sapiens \(human\) \]](#)

Official Symbol [LIN28A](#)

Synonyms CSDD1; LIN28; LIN-28; ZCCHC1; lin-28A

Gene ID [79727](#)

mRNA Refseq [NM_024674.6](#)

Protein Refseq [NP_078950.1](#)

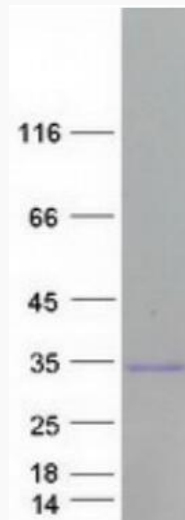
 Tel: 1-631-559-9269 1-516-512-3133

 Email: info@creative-biomart.com  Fax: 1-631-938-8127

 45-1 Ramsey Road, Shirley, NY 11967, USA

MIM 611043

UniProt ID Q9H9Z2



Coomassie blue staining of purified LIN28A protein.

 Tel: 1-631-559-9269 1-516-512-3133

 Email: info@creative-biomart.com  Fax: 1-631-938-8127

 45-1 Ramsey Road, Shirley, NY 11967, USA