

Recombinant Full Length Human LIN28A Protein, Tag Free

Cat. No. LIN28A-1577H Lot. No. (See product label)

SPECIFICATION

Product Overview	Recombinant Human LIN28A Protein (Full Length) without tag was expressed in E. coli.
Species	Human
Source	E.coli
Description	This gene encodes a LIN-28 family RNA-binding protein that acts as a posttranscriptional regulator of genes involved in developmental timing and self-renewal in embryonic stem cells. The encoded protein functions through direct interaction with target mRNAs and by disrupting the maturation of certain miRNAs involved in embryonic development. This protein prevents the terminal processing of the LET7 family of microRNAs which are major regulators of cellular growth and differentiation. Aberrant expression of this gene is associated with cancer progression in multiple tissues.
Form	Liquid
Molecular Mass	~24 kDa
Purity	≥95% by SDS-PAGE
Applications	WB
Storage	Short Term Storage: -80 centigrade

 Tel: 1-631-559-9269 1-516-512-3133

 Email: info@creative-biomart.com  Fax: 1-631-938-8127

 45-1 Ramsey Road, Shirley, NY 11967, USA

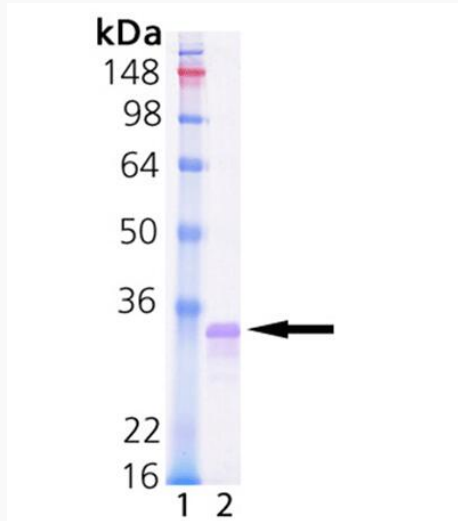
	Long Term Storage: -80 centigrade
Storage Buffer	In 20mM TRIS, pH 7.2, containing 200mM sodium chloride and 5mM dithiothreitol (DTT).
Handling	After reconstitution, prepare aliquots and store at -80 centigrade. Avoid freeze/thaw cycles.
Shipping	Shipped on Dry Ice
Full Length	Full L.
GENE INFORMATION	
Gene Name	LIN28A lin-28 homolog A [Homo sapiens (human)]
Official Symbol	LIN28A
Synonyms	LIN28A; lin-28 homolog A; CSDD1; LIN28; LIN-28; ZCCHC1; lin-28A; protein lin-28 homolog A; RNA-binding protein LIN-28; zinc finger CCHC domain-containing protein 1; zinc finger, CCHC domain containing 1
Gene ID	79727
mRNA Refseq	NM_024674
Protein Refseq	NP_078950
MIM	611043
UniProt ID	Q9H9Z2

 Tel: 1-631-559-9269 1-516-512-3133

 Email: info@creative-biomart.com  Fax: 1-631-938-8127

 45-1 Ramsey Road, Shirley, NY 11967, USA

SDS-PAGE



 Tel: 1-631-559-9269 1-516-512-3133

 Email: info@creative-biomart.com  Fax: 1-631-938-8127

 45-1 Ramsey Road, Shirley, NY 11967, USA