

Recombinant Human LIN28A Protein, Myc/DDK-tagged, C13 and N15-labeled

Cat. No. LIN28A-3677H Lot. No. (See product label)

SPECIFICATION

Product Overview

LIN28A MS Standard C13 and N15-labeled recombinant protein (NP_078950) with a C-terminal MYC/DDK tag, was expressed in HEK293 cells.

Species

Human

Source

HEK293

Description

This gene encodes a LIN-28 family RNA-binding protein that acts as a posttranscriptional regulator of genes involved in developmental timing and self-renewal in embryonic stem cells. The encoded protein functions through direct interaction with target mRNAs and by disrupting the maturation of certain miRNAs involved in embryonic development. This protein prevents the terminal processing of the LET7 family of microRNAs which are major regulators of cellular growth and differentiation. Aberrant expression of this gene is associated with cancer progression in multiple tissues.

Molecular Mass

22.7 kDa

AA Sequence

MGSVSNQQFAGGCAKAAEEAPEEAPEDAARAADPEQLLHGAGICKWFNVRMGFG
 FLSMTARAGVALDPPVDVVFVHQSKLHMEGFRSLKEGEAVEFTFKKSAKGLESIRVTG
 PGGVFCIGSERRPKGKSMQKRRSKGDRCYNCGGLDHHAKECKLPPQPKKCHFCQ
 SISHMVASCPLKAQQGPSAQQKPTYFREEEEEIHSPTLLPEAQNTRTRPLEQKLISEE
 DLAANDILDYKDDDDKV

 Tel: 1-631-559-9269 1-516-512-3133

 Email: info@creative-biomart.com  Fax: 1-631-938-8127

 45-1 Ramsey Road, Shirley, NY 11967, USA

Purity	> 80% as determined by SDS-PAGE and Coomassie blue staining
Stability	Stable for 3 months from receipt of products under proper storage and handling conditions.
Storage	Store at -80 centigrade. Avoid repeated freeze-thaw cycles.
Concentration	50 µg/mL as determined by BCA
Storage Buffer	100 mM glycine, 25 mM Tris-HCl, pH 7.3.

GENE INFORMATION

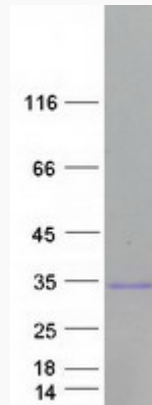
Gene Name	LIN28A lin-28 homolog A [Homo sapiens (human)]
Official Symbol	LIN28A
Synonyms	LIN28A; lin-28 homolog A; CSDD1; LIN28; LIN-28; ZCCHC1; lin-28A; protein lin-28 homolog A; RNA-binding protein LIN-28; zinc finger CCHC domain-containing protein 1; zinc finger, CCHC domain containing 1
Gene ID	79727
mRNA Refseq	NM_024674
Protein Refseq	NP_078950
MIM	611043
UniProt ID	Q9H9Z2

 Tel: 1-631-559-9269 1-516-512-3133

 Email: info@creative-biomart.com  Fax: 1-631-938-8127

 45-1 Ramsey Road, Shirley, NY 11967, USA

SDS-PAGE



 Tel: 1-631-559-9269 1-516-512-3133

 Email: info@creative-biomart.com  Fax: 1-631-938-8127

 45-1 Ramsey Road, Shirley, NY 11967, USA