

Recombinant Human LIN28A protein, His-tagged

Cat. No. LIN28A-7543H Lot. No. (See product label)

SPECIFICATION

Product Overview	Recombinant Human LIN28A protein(Q9H9Z2)(39-112aa), fused with N-terminal His tag, was expressed in E.coli.
Species	Human
Source	E.coli
ProteinLength	39-112aa
Form	If the delivery form is liquid, the default storage buffer is Tris/PBS-based buffer, 5%-50% glycerol. If the delivery form is lyophilized powder, the buffer before lyophilization is Tris/PBS-based buffer, 6% Trehalose, pH 8.0.
Molecular Mass	9.5 kDa
Purity	Greater than 90% as determined by SDS-PAGE.
Storage	Store at -20°C/-80°C upon receipt, aliquoting is necessary for mutiple use. Avoid repeated freeze-thaw cycles.
Reconstitution	We recommend that this vial be briefly centrifuged prior to opening to bring the contents to the bottom. Please reconstitute protein in deionized sterile water to a concentration of 0.1-1.0 mg/mL. We recommend to add 5-50% of glycerol (final concentration) and aliquot for long-term storage at -20°C/-80°C.

 Tel: 1-631-559-9269 1-516-512-3133

 Email: info@creative-biomart.com  Fax: 1-631-938-8127

 45-1 Ramsey Road, Shirley, NY 11967, USA

AA Sequence HGAGICKWFNVRMGFGFLSMTARAGVALDPPVDVVFVHQSKLHMEGFRSLKEGEAV
EFTFKKSAKGLSIRVTGP

GENE INFORMATION

Gene Name [LIN28A lin-28 homolog A \(C. elegans\) \[Homo sapiens \]](#)

Official Symbol [LIN28A](#)

Synonyms LIN28A; lin-28 homolog A (C. elegans); lin 28 homolog (C. elegans) , LIN28; protein lin-28 homolog A; CSDD1; FLJ12457; LIN 28; ZCCHC1; RNA-binding protein LIN-28; zinc finger, CCHC domain containing 1; zinc finger CCHC domain-containing protein 1; LIN28; LIN-28; lin-28A;

Gene ID [79727](#)

mRNA Refseq [NM_024674](#)

Protein Refseq [NP_078950](#)

MIM [611043](#)

UniProt ID [Q9H9Z2](#)

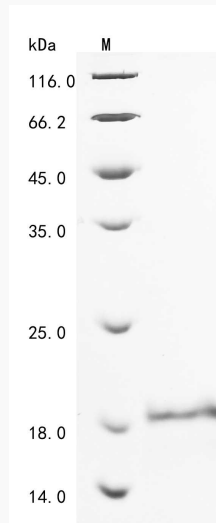
 Tel: 1-631-559-9269 1-516-512-3133

 Email: info@creative-biomart.com  Fax: 1-631-938-8127

 45-1 Ramsey Road, Shirley, NY 11967, USA



SDS-PAGE



Tel: 1-631-559-9269 1-516-512-3133

Email: info@creative-biomart.com Fax: 1-631-938-8127

45-1 Ramsey Road, Shirley, NY 11967, USA