

Recombinant Human LINGO2 Protein, Myc/DDK-tagged, C13 and N15-labeled

Cat. No. LINGO2-4808H Lot. No. (See product label)

SPECIFICATION

Product Overview	LINGO2 MS Standard C13 and N15-labeled recombinant protein (NP_689783) with a C-terminal MYC/DDK tag, was expressed in HEK293 cells.
Species	Human
Source	HEK293
Description	LINGO2 (Leucine Rich Repeat And Ig Domain Containing 2) is a Protein Coding gene. Diseases associated with LINGO2 include Tremor, Hereditary Essential, 3 and Tremor, Hereditary Essential, 5. An important paralog of this gene is LINGO1.
Molecular Mass	67.9 kDa
AA Sequence	<p>MLHTAISCWQPFLGLAVVLIFMGSTIGCPARCECSAQNKSVSCHRRRLIAIPEGIPIET KILDLSKNRLKSVNPEEFISYPLLEEIDLSDNIIANVEPGAFNNLFNLRSLRLKGNRLKL VPLGVFTGLSNLTKLDISENKIVILLDYMFQDLHNLKSLEVGDNLDLVYISHRAFSGLLS LEQLTLEKCNLTAVPTEALSHLRSLISLHLKHLNINMPVYAFKRLFHLKHLEIDYWPL LDMMPANSLYGLNLTSLSVTNTNLSTVPFLAFKHLVYLTHLNLSYNPISTIEAGMFSDL IRLQELHIVGAQLRTIEPHSFQGLRFLRVLNVSQNLLLETLEENVFSSPRALEVLSINNN PLACDCRLLWILQRQPTLQFGGQQPMCAGPDTIRERSFKDFHSTALSFYFTCKKPKI REKKLQHLLVDEGQTVQLECSADGDPQPVISWVTPRRRFITTKSNGRATVLGDGTL EIRFAQDQDSGMVCIASNAAGNDTFTASLTVKGFASDRFLYANRTPMYMTDSNDTI SNGTNANTFSLDLKILVSTAMGCFTFLGVVLFVWSRGKGGKHKNSIDLEYVP</p>

 Tel: 1-631-559-9269 1-516-512-3133

 Email: info@creative-biomart.com  Fax: 1-631-938-8127

 45-1 Ramsey Road, Shirley, NY 11967, USA

RKNNGAVVEGEVAGPRRFNMKMGPTTRTRRLEQKLISEEDLAANDILDYKDDDDK
V

Purity > 80% as determined by SDS-PAGE and Coomassie blue staining

Stability Stable for 3 months from receipt of products under proper storage and handling conditions.

Storage Store at -80 centigrade. Avoid repeated freeze-thaw cycles.

Concentration 50 µg/mL as determined by BCA

Storage Buffer 100 mM glycine, 25 mM Tris-HCl, pH 7.3.

GENE INFORMATION

Gene Name LINGO2 leucine rich repeat and Ig domain containing 2 [Homo sapiens (human)]

Official Symbol LINGO2

Synonyms LINGO2; leucine rich repeat and Ig domain containing 2; LERN3; LRRN6C; leucine-rich repeat and immunoglobulin-like domain-containing nogo receptor-interacting protein 2; leucine rich repeat neuronal 6C; leucine-rich repeat neuronal protein 3; leucine-rich repeat neuronal protein 6C

Gene ID 158038

mRNA Refseq NM_152570

Protein Refseq NP_689783

 Tel: 1-631-559-9269 1-516-512-3133

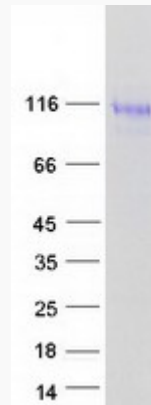
 Email: info@creative-biomart.com  Fax: 1-631-938-8127

 45-1 Ramsey Road, Shirley, NY 11967, USA

MIM 609793

UniProt ID Q7L985

SDS-PAGE



 Tel: 1-631-559-9269 1-516-512-3133

 Email: info@creative-biomart.com  Fax: 1-631-938-8127

 45-1 Ramsey Road, Shirley, NY 11967, USA