

Recombinant Human LINGO4 Protein, Myc/DDK-tagged, C13 and N15-labeled

Cat. No. LINGO4-2035H Lot. No. (See product label)

SPECIFICATION

Product Overview

LINGO4 MS Standard C13 and N15-labeled recombinant protein (NP_001004432) with a C-terminal MYC/DDK tag, was expressed in HEK293 cells.

Species

Human

Source

HEK293

Description

LINGO4 (Leucine Rich Repeat And Ig Domain Containing 4) is a Protein Coding gene. Diseases associated with LINGO4 include Tremor, Hereditary Essential, 5 and Tremor, Hereditary Essential, 4. An important paralog of this gene is LINGO3.

Molecular Mass

63.6 kDa

AA Sequence

MDAATAPKQAWPPWPPLLFLLLLPGGSGGSCPAVCDCTSQPQAVLCGHRQLEAVP
 GGLPLDTELLDLSGNRLWGLQQGMLSRLSLLQELDLSYNQLSTLEPGAFHGLQSLLT
 LRLQGNRLRIMGPGVFSGLSALTLLDLRLNQIVLFLDGAFGELGSLQKLEVGDNHLVF
 VAPGAFAGLAKLSTLTLCRNLSTVPGALALRPAVALRLRELDIGRLPAGALRGLG
 QLKELEIHLWPSLEALDPGSLVGLNLSSLAITRCNLSSVPPFQALYHLSFLRVLDLSQN
 PISAIPARRLSPLVRLQELRLSGACLTSIAAHAFHGLTAFHLLDVADNALQTLEETAFP
 SPDKLVTLRLSGNPLTCDRCLLWLLRLRRHLDFGMSPACAGPHHVQKSLKEFSD
 ILPPGHFTCKPALIRKSGPRWVIAEEGGHAVFSCSGDGDPAPTVSWMRPHGAWLG
 RAGRVRVLEDGTLEIRSVQLRDRGAYVCVVSNAVGNDSLRTWLEVIQVEPPNGTSL
 DPNITVPGIPGPFLLDSRGVAMVLAVGFLPFLTSVTLCFGLIALWSKGKGRVKHHMTF

 Tel: 1-631-559-9269 1-516-512-3133

 Email: info@creative-biomart.com  Fax: 1-631-938-8127

 45-1 Ramsey Road, Shirley, NY 11967, USA



DFVAPRPSGDKNSGGNRVTAKLFTRTRPLEQKLISEEDLAANDILDYKDDDDKV

Purity > 80% as determined by SDS-PAGE and Coomassie blue staining

Stability Stable for 3 months from receipt of products under proper storage and handling conditions.

Storage Store at -80 centigrade. Avoid repeated freeze-thaw cycles.

Concentration 50 µg/mL as determined by BCA

Storage Buffer 100 mM glycine, 25 mM Tris-HCl, pH 7.3.

GENE INFORMATION

Gene Name LINGO4 leucine rich repeat and Ig domain containing 4 [Homo sapiens (human)]

Official Symbol LINGO4

Synonyms LINGO4; leucine rich repeat and Ig domain containing 4; leucine rich repeat neuronal 6D, LRRN6D; leucine-rich repeat and immunoglobulin-like domain-containing nogo receptor-interacting protein 4; leucine rich repeat neuronal 6D; leucine-rich repeat neuronal protein 6D; LRRN6D; DAAT9248; PRO34002;

Gene ID 339398

mRNA Refseq NM_001004432

Protein Refseq NP_001004432

MIM 609794

Tel: 1-631-559-9269 1-516-512-3133

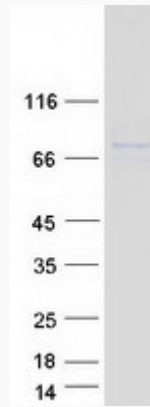
Email: info@creative-biomart.com Fax: 1-631-938-8127

45-1 Ramsey Road, Shirley, NY 11967, USA

UniProt ID

Q6UY18

SDS-PAGE



 Tel: 1-631-559-9269 1-516-512-3133

 Email: info@creative-biomart.com  Fax: 1-631-938-8127

 45-1 Ramsey Road, Shirley, NY 11967, USA