

## Recombinant Mouse Lingo4 protein, His-tagged

Cat. No. LINGO4-9124M Lot. No. (See product label)

### SPECIFICATION

<b>Product Overview</b>	Recombinant Mouse Lingo4 fused with His tag was expressed in E. coli.
<b>Species</b>	Mouse
<b>Source</b>	E.coli
<b>Form</b>	20mM Tris-HCl, pH 8.0, 100mM NaCl.
<b>Molecular Mass</b>	(Theoretical molecular weight)~57kDa including His tag.
<b>AA Sequence</b>	<p>MNHKVHHHHHHMCPARCECSASTRTVACGRRRLTAIPEGIPAETRMLELSRNRIRC  LNPGLASLPTLEELDLNHNVIAHVEPGAFANLPRLRVLRRLRGNQLKLIPPGVFTHLD  SLTLLDLSENKLVILLDFSFQDLRSLQRLEVGDNDLVFISRRAFAGLLGLAELTLERCN  LTSLSPESLGHRLRGLGALRLRHLAIAALEDQNFQKLPGLSHLEIDNWPLLEEVAPGSL  RGLNLTSLSITHTNITAVPAAALRQQAHLTCLNLSHNPISMVPRGSFRDLVRLRELHL  AGALLAVIEPQAFVGLRQIRLLNLSDNLLSTLEENTFHSVNTLETLRVDGNPLACDCR  LLWIVQRRKTLNFDGRLPACATPAEVRGDALHNLDPDVLFEYFVCRKPKIRERRLQH  VTATEGDDVRFLCRAEGEPAPTVAVWVTPQHHSVTAASRGRARVLPGGTLTIADTRP  QDSGYTCVASNAGGNDTYFATLTVQPAANRTQGDGHNETQVGVRFPLDLTTILVS  T</p>
<b>Purity</b>	> 90% as determined by SDS-PAGE
<b>Storage</b>	Short Term Storage at +4 centigrade, Long Term, please prepare aliquots with 20% glycerol and store at -20~-80 centigrade. Avoid freeze/thaw cycles.

 Tel: 1-631-559-9269 1-516-512-3133

 Email: [info@creative-biomart.com](mailto:info@creative-biomart.com)  Fax: 1-631-938-8127

 45-1 Ramsey Road, Shirley, NY 11967, USA

**Concentration** 1 mg/ml

## GENE INFORMATION

**Gene Name** Lingo4 leucine rich repeat and Ig domain containing 4 [ *Mus musculus* ]

**Official Symbol** Lingo4

**Synonyms** LINGO4; leucine rich repeat and Ig domain containing 4; leucine-rich repeat and immunoglobulin-like domain containing-NOGO receptor-interacting protein 4; leucine rich repeat neuronal 6D; leucine-rich repeat neuronal protein 6D; LERN4; Lrrn6d; A530050P17Rik;

**Gene ID** 320747

**mRNA Refseq** NM\_177250

**Protein Refseq** NP\_796224

**UniProt ID** Q149C3

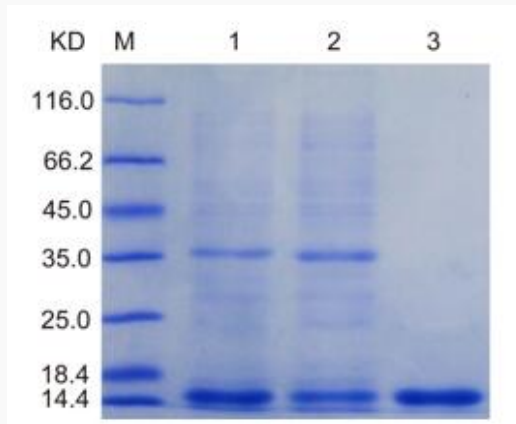
**Chromosome Location** 3; 3 F2.1

**Function** molecular\_function;

 Tel: 1-631-559-9269 1-516-512-3133

 Email: [info@creative-biomart.com](mailto:info@creative-biomart.com)  Fax: 1-631-938-8127

 45-1 Ramsey Road, Shirley, NY 11967, USA



Lane M: Protein Marker  
Lane 1: Un-purified  
Lane 2: Flow through  
Lane 3: Elution

 Tel: 1-631-559-9269 1-516-512-3133

 Email: [info@creative-biomart.com](mailto:info@creative-biomart.com)  Fax: 1-631-938-8127

 45-1 Ramsey Road, Shirley, NY 11967, USA