

Recombinant Human LMAN1L Protein (26-462 aa), His-SUMO-tagged

Cat. No. LMAN1L-1117H Lot. No. (See product label)

SPECIFICATION

Product Overview Recombinant Human LMAN1L Protein (26-462 aa) is produced by E. coli expression system. This protein is fused with a 6xHis-SUMO tag at the N-terminal. Research Area: Signal Transduction. Protein Description: Full Length of Mature Protein.

Species Human

Source E.coli

ProteinLength 26-462 aa

Form Tris-based buffer, 50% glycerol

Molecular Mass 63.5 kDa

AA Sequence

GCPPLRRFEYKLSFKGPRLALPGAGIPFWSHHGDAILGLEEVRLTPSMRNRSGAVW
 SRASVPFSAWEVEVQMRVTGLGRRGAQGMVWYTRGRGHVGSVLGGLASWDGI
 GIFFDSPAEDTQDSPAIRVLASDGHIPSEQPGDGASQQLGSGHWDFRNRPHPFRRAR
 ITYWGQRLRMSLNSGLTPSDPGEFCVDVGPPLLLVPGGFFGVSAATGTLADDHDVLS
 FLTFSLSEPSPEVPPQPFLMQLRLARQLEGLWARLGLGTREDVTPKSDSEAQGE
 GERLFDLEETLGRHRRILQALRGLSKQLAQAERQWKKQLGPPGQARPDGGWALDA
 SCQIPSTPGRGGHLSMSLNKDSAKVGALLHGQWTLLQALQEMRDAAVRMAAEAQV
 SYLPVGIEHHFLELDHILGLLQEELRGPAAKAAKAPRPPGQPPRASSCLQ

Purity > 90% as determined by SDS-PAGE.

 Tel: 1-631-559-9269 1-516-512-3133

 Email: info@creative-biomart.com  Fax: 1-631-938-8127

 45-1 Ramsey Road, Shirley, NY 11967, USA

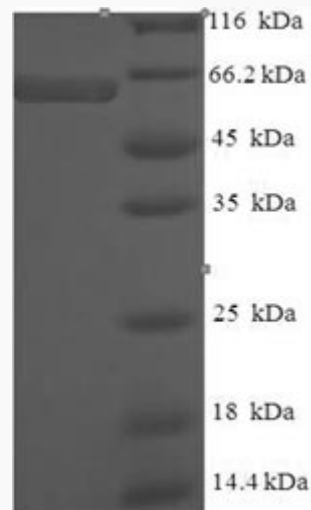
Notes Repeated freezing and thawing is not recommended. Store working aliquots at 4 centigrade for up to one week.

Storage The shelf life is related to many factors, storage state, buffer ingredients, storage temperature and the stability of the protein itself. Generally, the shelf life of liquid form is 6 months at -20 centigrade/-80 centigrade. The shelf life of lyophilized form is 12 months at -20 centigrade/-80 centigrade.

Concentration A hardcopy of COA with concentration instruction is sent along with the products.

GENE INFORMATION

UniProt ID Q9HAT1



(Tris-Glycine gel) Discontinuous SDS-PAGE (reduced) with 5% enrichment gel and 15% separation gel.

 Tel: 1-631-559-9269 1-516-512-3133

 Email: info@creative-biomart.com  Fax: 1-631-938-8127

 45-1 Ramsey Road, Shirley, NY 11967, USA