

Recombinant Human LMAN1L Protein (26-462 aa), His-tagged

Cat. No. LMAN1L-1708H Lot. No. (See product label)

SPECIFICATION

Product Overview Recombinant Human LMAN1L Protein (26-462 aa) is produced by Yeast expression system. This protein is fused with a 6xHis tag at the N-terminal. Research Area: Signal Transduction. Protein Description: Full Length of Mature Protein.

Species Human

Source Yeast

ProteinLength 26-462 aa

Form Tris-based buffer, 50% glycerol

Molecular Mass 49.5 kDa

AA Sequence

```
GCPPLRRFEYKLSFKGPRLALPGAGIPFWSHHGDAILGLEEVRLTPSMRNRSGAVW
SRASVPFSAWEVEVQMRVTGLGRRGAQGMVWYTRGRGHVGSVLGGLASWDGI
GIFFDSPAEDTQDSPAIRVLASDGHIPSEQPGDGASQQLGSCHWDFRNRPHFRAR
ITYWGQRLRMSLNSGLTPSDPGEFCVDVGPLLLVPGGFFGVSAATGTLADDHDVLS
FLTFSLSPEPSPEVPPQPFFLEMQQLRLARQLEGLWARLGLGTREDVTPKSDSEAQGE
GERLFDLEETLGRHRRILQALRGLSKQLAQAERQWKKQLGPPGQARPDGGWALDA
SCQIPSTPGRGGHLSMSLNKDSAKVGALLHGQWTLQLALQEMRDAAVRMAAEAQV
SYLPVGIEHHFLELDHILGLLQEELRGPAAKAAKAPRPPGQPPRASSCLQ
```

Purity > 90% as determined by SDS-PAGE.

 Tel: 1-631-559-9269 1-516-512-3133

 Email: info@creative-biomart.com  Fax: 1-631-938-8127

 45-1 Ramsey Road, Shirley, NY 11967, USA

Notes	Repeated freezing and thawing is not recommended. Store working aliquots at 4 centigrade for up to one week.
Storage	The shelf life is related to many factors, storage state, buffer ingredients, storage temperature and the stability of the protein itself. Generally, the shelf life of liquid form is 6 months at -20 centigrade/-80 centigrade. The shelf life of lyophilized form is 12 months at -20 centigrade/-80 centigrade.
Concentration	A hardcopy of COA with reconstitution instruction is sent along with the products.

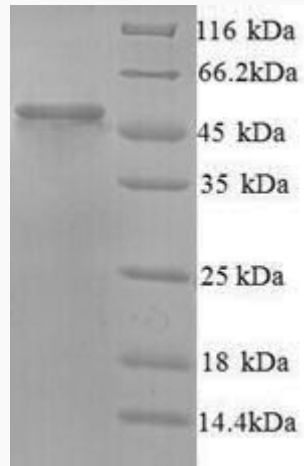
GENE INFORMATION

Gene Name	LMAN1L lectin, mannose binding 1 like [Homo sapiens (human)]
Official Symbol	LMAN1L
Synonyms	ERGL; ERGIC-53L;
Gene ID	79748
mRNA Refseq	NM_021819
Protein Refseq	NP_068591
UniProt ID	Q9HAT1

 Tel: 1-631-559-9269 1-516-512-3133

 Email: info@creative-biomart.com  Fax: 1-631-938-8127

 45-1 Ramsey Road, Shirley, NY 11967, USA



(Tris-Glycine gel) Discontinuous SDS-PAGE (reduced) with 5% enrichment gel and 15% separation gel.

 Tel: 1-631-559-9269 1-516-512-3133

 Email: info@creative-biomart.com  Fax: 1-631-938-8127

 45-1 Ramsey Road, Shirley, NY 11967, USA