

Recombinant Human LMAN2L Protein, MYC/DDK-tagged, C13 and N15-labeled

Cat. No. LMAN2L-300H Lot. No. (See product label)

SPECIFICATION

Product Overview	LMAN2L MS Standard C13 and N15-labeled recombinant protein (NP_110432) with a C-terminal MYC/DDK tag, was expressed in HEK293 cells.
Species	Human
Source	HEK293
Description	This gene encodes a protein belonging to the L-type lectin group of type 1 membrane proteins, which function in the mammalian early secretory pathway. These proteins contain luminal carbohydrate recognition domains, which display homology to leguminous lectins. Unlike other proteins of the group, which cycle in the early secretory pathway and are predominantly associated with post endoplasmic reticulum membranes, the protein encoded by this gene is a non-cycling resident protein of the ER, where it functions as a cargo receptor for glycoproteins. It is proposed to regulate exchange of folded proteins for transport to the Golgi and exchange of misfolded glycoproteins for transport to the ubiquitin-proteasome pathway. [provided by RefSeq, Apr 2016]
Molecular Mass	39.7 kDa
AA Sequence	MAATLGPLGSWQQWRRCLSARDGSRMLLLLLLLGSGQGPPQVQVAGQTFEYLKRE HLSKPYQGVGTGSSSLWNLGMNAMVMTQYIRLTPDMQSKQGALWNRVPCFLRD WELQVHFKIHGQGKKNLHGDGLAIWYTKDRMQPGPVFGNMDKFGVGLGVFVDTPN

 Tel: 1-631-559-9269 1-516-512-3133

 Email: info@creative-biomart.com  Fax: 1-631-938-8127

 45-1 Ramsey Road, Shirley, NY 11967, USA

EEKQQQERVFPYISAMVNNGLSLSYDHERDGRPTTELGGCTAIVRNLYDFTFLVIRYVVKR
 HLTIMMDIDGKHEWRDCIEVPGVRLPRGYFSGTSSITGDLSNDHVISLKLFLFELTVER
 TPEEEKLHRDVFPLPSVDNMKLPENTAPLPPLSGLALFLIVFFSLVFSVFAIVIGIILYNK
 WQEQRKRFRYTRTRPLEQKLISEEDLAANDILDYKDDDDKV

Purity > 80% as determined by SDS-PAGE and Coomassie blue staining

Stability Stable for 3 months from receipt of products under proper storage and handling conditions.

Storage Store at -80 centigrade. Avoid repeated freeze-thaw cycles.

Concentration 50 µg/mL as determined by BCA

Storage Buffer 100 mM glycine, 25 mM Tris-HCl, pH 7.3.

GENE INFORMATION

Gene Name LMAN2L lectin, mannose-binding 2-like [Homo sapiens (human)]

Official Symbol LMAN2L

Synonyms LMAN2L; lectin, mannose-binding 2-like; VIP36-like protein; DKFZp564L2423; VIPL; LMAN2-like protein; MGC11139;

Gene ID 81562

mRNA Refseq NM_030805

Protein Refseq NP_110432

 Tel: 1-631-559-9269 1-516-512-3133

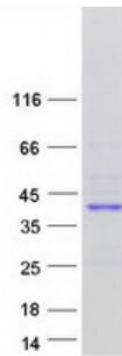
 Email: info@creative-biomart.com  Fax: 1-631-938-8127

 45-1 Ramsey Road, Shirley, NY 11967, USA

MIM 609552

UniProt ID Q9H0V9

SDS-PAGE



 Tel: 1-631-559-9269 1-516-512-3133

 Email: info@creative-biomart.com  Fax: 1-631-938-8127

 45-1 Ramsey Road, Shirley, NY 11967, USA