

Recombinant Human LMAN2L Protein (Ser19-Ala313), C-His tagged

Cat. No. LMAN2L-5194H Lot. No. (See product label)

SPECIFICATION

Product Overview	Recombinant human LMAN2L (Ser19-Ala313) fused with the C-terminal His tag was expressed in Mammalian cells.
Species	Human
Source	Mammalian Cells
ProteinLength	Ser19-Ala313
Form	Lyophilized powder/frozen liquid
Molecular Mass	32.45 kDa
Endotoxin	< 1.0 EU/μg of the protein as determined by the LAL method.
Purity	>90% as determined by SDS-PAGE.
Notes	For research use only.
Storage	Use a manual defrost freezer and avoid repeated freeze thaw cycles. Store at 2 to 8 centigrade for one week. Store at -20 to -80 centigrade for twelve months from the date of receipt.
Storage Buffer	Supplied as solution form in PBS or lyophilized from PBS.

 Tel: 1-631-559-9269 1-516-512-3133

 Email: info@creative-biomart.com  Fax: 1-631-938-8127

 45-1 Ramsey Road, Shirley, NY 11967, USA

Reconstitution Reconstitute in sterile water for a stock solution.

Shipping They are shipped out with dry ice/blue ice unless customers require otherwise.

GENE INFORMATION

Gene Name LMAN2L lectin, mannose-binding 2-like [Homo sapiens (human)]

Official Symbol LMAN2L

Synonyms LMAN2L; lectin, mannose-binding 2-like; VIP36-like protein; DKFZp564L2423; VIPL; LMAN2-like protein; MGC11139;

Gene ID 81562

mRNA Refseq NM_001142292

Protein Refseq NP_001135764

MIM 609552

UniProt ID Q9H0V9

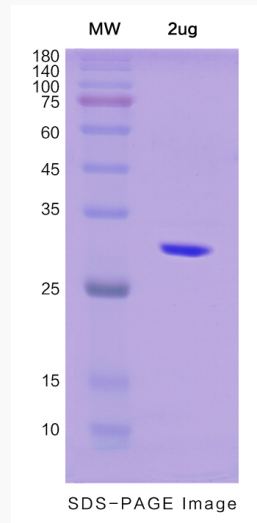
 Tel: 1-631-559-9269 1-516-512-3133

 Email: info@creative-biomart.com  Fax: 1-631-938-8127

 45-1 Ramsey Road, Shirley, NY 11967, USA



SDS-PAGE



Tel: 1-631-559-9269 1-516-512-3133

Email: info@creative-biomart.com Fax: 1-631-938-8127

45-1 Ramsey Road, Shirley, NY 11967, USA