

## Recombinant Human LMBR1 Protein, GST-Tagged

Cat. No. LMBR1-1311H Lot. No. (See product label)

### SPECIFICATION

<b>Product Overview</b>	Human C7orf2 partial ORF (NP_071903, 214 a.a. - 295 a.a.) recombinant protein with GST-tag at N-terminal.
<b>Species</b>	Human
<b>Source</b>	Wheat Germ
<b>Description</b>	This gene encodes a member of the LMBR1-like membrane protein family. Another member of this protein family has been shown to be a lipocalin transmembrane receptor. A highly conserved, cis-acting regulatory module for the sonic hedgehog gene is located within an intron of this gene. Consequently, disruption of this genic region can alter sonic hedgehog expression and affect limb patterning, but it is not known if this gene functions directly in limb development. Mutations and chromosomal deletions and rearrangements in this genic region are associated with acheiropody and preaxial polydactyly, which likely result from altered sonic hedgehog expression. [provided by RefSeq, Jul 2008]
<b>Molecular Mass</b>	34.76 kDa
<b>AA Sequence</b>	SRMFTVMGQLLVKPTILEDLDEQIYIITLEEEALQRRRLNGLSSSVVEYNIMELEQELENV KTLKTKLERRKKASAWERNLVYP
<b>Applications</b>	Enzyme-linked Immunoabsorbent Assay Western Blot (Recombinant protein) Antibody Production

 Tel: 1-631-559-9269 1-516-512-3133

 Email: [info@creative-biomart.com](mailto:info@creative-biomart.com)  Fax: 1-631-938-8127

 45-1 Ramsey Road, Shirley, NY 11967, USA

Protein Array

**Storage** Store at -80 centigrade. Aliquot to avoid repeated freezing and thawing.

**Storage Buffer** 50 mM Tris-HCl, 10 mM reduced Glutathione, pH=8.0 in the elution buffer.

## GENE INFORMATION

**Gene Name** [LMBR1 limb region 1 homolog \(mouse\) \[ Homo sapiens \]](#)

**Official Symbol** [LMBR1](#)

**Synonyms** LMBR1; limb region 1 homolog (mouse); C7orf2, chromosome 7 open reading frame 2; limb region 1 protein homolog; ACHP; FLJ11665; differentiation-related gene 14 protein; TPT; PPD2; DIF14; C7orf2;

**Gene ID** [64327](#)

**mRNA Refseq** [NM\\_022458](#)

**Protein Refseq** [NP\\_071903](#)

**MIM** [605522](#)

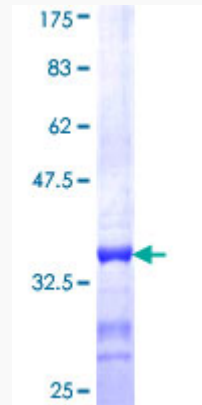
**UniProt ID** [Q8WVP7](#)

 Tel: 1-631-559-9269 1-516-512-3133

 Email: [info@creative-biomart.com](mailto:info@creative-biomart.com)  Fax: 1-631-938-8127

 45-1 Ramsey Road, Shirley, NY 11967, USA

**Quality Control  
Testing**



12.5% SDS-PAGE Stained with Coomassie Blue.

 Tel: 1-631-559-9269 1-516-512-3133

 Email: [info@creative-biomart.com](mailto:info@creative-biomart.com)  Fax: 1-631-938-8127

 45-1 Ramsey Road, Shirley, NY 11967, USA