

# Recombinant Human LMBR1 Protein, Myc/DDK-tagged, C13 and N15-labeled

Cat. No. LMBR1-6118H Lot. No. (See product label)

## SPECIFICATION

<b>Product Overview</b>	LMBR1 MS Standard C13 and N15-labeled recombinant protein (NP_071903) with a C-terminal MYC/DDK tag, was expressed in HEK293 cells.
<b>Species</b>	Human
<b>Source</b>	HEK293
<b>Description</b>	This gene encodes a member of the LMBR1-like membrane protein family. Another member of this protein family has been shown to be a lipocalin transmembrane receptor. A highly conserved, cis-acting regulatory module for the sonic hedgehog gene is located within an intron of this gene. Consequently, disruption of this genic region can alter sonic hedgehog expression and affect limb patterning, but it is not known if this gene functions directly in limb development. Mutations and chromosomal deletions and rearrangements in this genic region are associated with acheiropody and preaxial polydactyly, which likely result from altered sonic hedgehog expression.
<b>Molecular Mass</b>	55.1 kDa
<b>AA Sequence</b>	MEGQDEVSAREQHFHSQVRESTICFLLFAILYVVSFYIITRYKRKSDEQEDEDIVAIVNRI SLFLSTFTLAVSAGAVLLL PFSIISNEILLSFPQNYIQWLNGLIHLWNLASLFSNLC LFVLMPPFAFFLESEGFAGLKKGIRARILETLVMLLLLALLILGIVVVASALIDNDAASM ESLYDLWEFYLPYLYSCISLMGCLLLLLCTPVGLSRMFTVMGQLLVKPTILEDLDEQIY

 Tel: 1-631-559-9269 1-516-512-3133

 Email: [info@creative-biomart.com](mailto:info@creative-biomart.com)  Fax: 1-631-938-8127

 45-1 Ramsey Road, Shirley, NY 11967, USA

IITLEEEALQRRRLNGLSSSSVEYNIMELEQELENVKTCLKLERRKKASAWERNLVYPA  
 VMVLLLIETSISVLLVACNILCLLVDETAMPKGRGPGIGNASLSTFGFVGAALEIILIFY  
 LMVSSVVGFYSLRFFGNFTPKDDTTMTKIIGNCVSILVLSSALPVMMSRTLGITRFDLL  
 GDFGRFNWLGNFYIVLSYNLLFAIVTTLCLVRKFTSAVREELFKALGLHKLHLPNTSR  
 DSETAKPSVNGHQKALTRTRPLEQKLISEEDLAANDILDYKDDDDKV

**Purity** > 80% as determined by SDS-PAGE and Coomassie blue staining

**Stability** Stable for 3 months from receipt of products under proper storage and handling conditions.

**Storage** Store at -80 centigrade. Avoid repeated freeze-thaw cycles.

**Concentration** 50 µg/mL as determined by BCA

**Storage Buffer** 100 mM glycine, 25 mM Tris-HCl, pH 7.3.

## GENE INFORMATION

**Gene Name** [LMBR1 limb development membrane protein 1 \[ Homo sapiens \(human\) \]](#)

**Official Symbol** [LMBR1](#)

**Synonyms** LMBR1; limb region 1 homolog (mouse); C7orf2, chromosome 7 open reading frame 2; limb region 1 protein homolog; ACHP; FLJ11665; differentiation-related gene 14 protein; TPT; PPD2; DIF14; C7orf2;

**Gene ID** [64327](#)

**mRNA Refseq** [NM\\_022458](#)

 Tel: 1-631-559-9269 1-516-512-3133

 Email: [info@creative-biomart.com](mailto:info@creative-biomart.com)  Fax: 1-631-938-8127

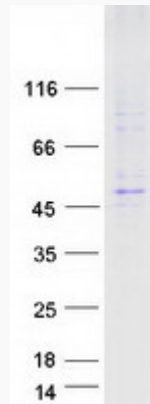
 45-1 Ramsey Road, Shirley, NY 11967, USA

**Protein Refseq** NP\_071903

**MIM** 605522

**UniProt ID** Q8WVP7

**SDS-PAGE**



 Tel: 1-631-559-9269 1-516-512-3133

 Email: [info@creative-biomart.com](mailto:info@creative-biomart.com)  Fax: 1-631-938-8127

 45-1 Ramsey Road, Shirley, NY 11967, USA