

Active Recombinant Full Length Human LMNB1 Protein, Flag tagged

Cat. No. LMNB1-1638HFL Lot. No. (See product label)

SPECIFICATION

Product Overview	Recombinant full length protein of human lamin B1 (LMNB1) with Flag tag was expressed in HEK293T.
Species	Human
Source	HEK293T
ProteinLength	1-568 aa
Description	This gene encodes one of the two B-type lamin proteins and is a component of the nuclear lamina. A duplication of this gene is associated with autosomal dominant adult-onset leukodystrophy (ADLD). Alternative splicing results in multiple transcript variants.
Form	25 mM Tris-HCl, 100 mM glycine, pH 7.3, 10% glycerol
Bio-activity	Proteolysis substrate
Molecular Mass	66.2 kDa
Purity	> 80% as determined by SDS-PAGE and Coomassie blue staining
Notes	For testing in cell culture applications, please filter before use. Note that you may experience some loss of protein during the filtration process.

 Tel: 1-631-559-9269 1-516-512-3133

 Email: info@creative-biomart.com  Fax: 1-631-938-8127

 45-1 Ramsey Road, Shirley, NY 11967, USA

Storage Store at -80 centigrade. Stable for 12 months from the date of receipt of the product under proper storage and handling conditions. Avoid repeated freeze-thaw cycles.

Concentration >0.1 µg/µL as determined by microplate BCA method

GENE INFORMATION

Gene Name LMNB1 lamin B1 [Homo sapiens (human)]

Official Symbol LMNB1

Synonyms LMNB1; lamin B1; LMN; ADLD; LMN2; LMNB; MCPH26; lamin-B1

Gene ID 4001

mRNA Refseq NM_005573

Protein Refseq NP_005564

MIM 150340

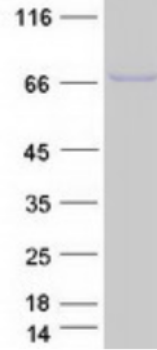
UniProt ID P20700

 Tel: 1-631-559-9269 1-516-512-3133

 Email: info@creative-biomart.com  Fax: 1-631-938-8127

 45-1 Ramsey Road, Shirley, NY 11967, USA

SDS-PAGE



 Tel: 1-631-559-9269 1-516-512-3133

 Email: info@creative-biomart.com  Fax: 1-631-938-8127

 45-1 Ramsey Road, Shirley, NY 11967, USA