

Recombinant Human LMNB1 protein, His-tagged

Cat. No. LMNB1-216H Lot. No. (See product label)

SPECIFICATION

Product Overview	Recombinant Human LMNB1 protein(NP_001185486)(237-587 aa), fused to His tag, was expressed in E. coli.
Species	Human
Source	E.coli
ProteinLength	237-587 aa
Form	The purified protein was Lyophilized from sterile PBS (58mM Na ₂ HPO ₄ , 17mM NaH ₂ PO ₄ , 68mM NaCl, pH7.). 5 % trehalose and 5 % mannitol are added as protectants before lyophilization.
AA Sequence	EY EYKLAQALHEMREQHDAQVRLYKEELEQTYHAKLENARLSSEMNTSTVNSAREE LMESRMRIESLSSQLSNLQKESRACLRIQELEDLLAKEKDNSRRMLTDKEREMAEI RDQMQQQLNDYEQLLDVKLALDMEISAYRKLLQGEEERLKLSPSPSSRVTVSRASS SRSVRTTRGKRKRVDVEESEASSSVSISHSASATGNVCIEEIDVDGKFIRLKNTSEQD QPMGGWEMIRKIGDTSVSYKYTSRYVLKAGQVTIWAANAGVTASPTDLIWKNN SWGTEGVDKVKILKNSQGEEVAQRSTVFKTTIPEEEEEEEEAAGVVVEEELFHQQGT PRASNRSCAIM
Purity	95%, by SDS-PAGE with Coomassie Brilliant Blue staining.
Storage	Short-term storage: Store at 2-8°C for (1-2 weeks). Long-term storage: Aliquot and store at -20°C to -80°C for up to 3 months, buffer

 Tel: 1-631-559-9269 1-516-512-3133

 Email: info@creative-biomart.com  Fax: 1-631-938-8127

 45-1 Ramsey Road, Shirley, NY 11967, USA

containing 50% glycerol is recommended for reconstitution. Avoid repeat freeze-thaw cycles.

Reconstitution

Reconstitute at 0.25 g/μl in 200 μl sterile water for short-term storage.
 Reconstitution with 200 μl 50% glycerol solution is recommended for longer term storage (see Stability and Storage for more details).

If a different concentration is needed for your purposes please adjust the reconstitution volume as required (please note: the ion concentration of the final solution will vary according to the volume used).

Note: Centrifuge vial before opening. When reconstituting, gently pipet and wash down the sides of the vial to ensure full recovery of the protein into solution.

GENE INFORMATION

Gene Name	LMNB1 lamin B1 [Homo sapiens]
Official Symbol	LMNB1
Synonyms	LMNB1; lamin B1; lamin-B1; LMN; ADLD; LMN2; LMNB; MGC111419;
Gene ID	4001
mRNA Refseq	NM_001198557
Protein Refseq	NP_001185486
MIM	150340
UniProt ID	P20700

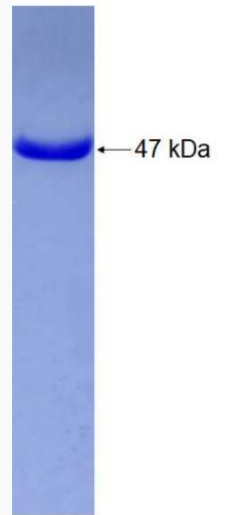
 Tel: 1-631-559-9269 1-516-512-3133

 Email: info@creative-biomart.com  Fax: 1-631-938-8127

 45-1 Ramsey Road, Shirley, NY 11967, USA



SDS-PAGE



Tel: 1-631-559-9269 1-516-512-3133

Email: info@creative-biomart.com Fax: 1-631-938-8127

45-1 Ramsey Road, Shirley, NY 11967, USA