

# Recombinant Human LMNB2 Protein, Myc/DDK-tagged, C13 and N15-labeled

Cat. No. LMNB2-1762H Lot. No. (See product label)

## SPECIFICATION

<b>Product Overview</b>	LMNB2 MS Standard C13 and N15-labeled recombinant protein (NP_116126) with a C-terminal MYC/DDK tag, was expressed in HEK293 cells.
<b>Species</b>	Human
<b>Source</b>	HEK293
<b>Description</b>	This gene encodes a B type nuclear lamin. The nuclear lamina consists of a two-dimensional matrix of proteins located next to the inner nuclear membrane. The lamin family of proteins make up the matrix and are highly conserved in evolution. During mitosis, the lamina matrix is reversibly disassembled as the lamin proteins are phosphorylated. Lamin proteins are thought to be involved in nuclear stability, chromatin structure and gene expression. Vertebrate lamins consist of two types, A and B. Mutations in this gene are associated with acquired partial lipodystrophy.
<b>Molecular Mass</b>	67.7 kDa
<b>AA Sequence</b>	MATPLPGRAGGPATPLSPTRLRLQEKEELRELNDRLAHYIDRVRALELENDRLLLKI SEKEEVTTRVSGIKALYESELADARRVLDETARERARLQIEIGKLRAELDEVNKS AKREGELTVAQGRVKDLESLFHRSEVELAAALSDKRGLESDVAELRAQLAKAEDGHA VAKKQLEKETLMRVDLENRCQSLQEELDFRKSVFEEVRETRRRHERRLVEVDSSR QQEYDFKMAQALEELRSQHDEQVRLYKLELEQTYQAKLDSAKLSSDQNDKAASAA REELKEARMRLESLSYQLSGLQKQASAAEDRIRELEEAMAGERDKFRKMLDAKEQE

 Tel: 1-631-559-9269 1-516-512-3133

 Email: [info@creative-biomart.com](mailto:info@creative-biomart.com)  Fax: 1-631-938-8127

 45-1 Ramsey Road, Shirley, NY 11967, USA

MTEMRDVMQQQLAEYQELLDVKLALDMEINAYRKLEEGEEERLKLSPSPSSRVTVS  
 RATSSSSGSLSATGRLGRSKRKRLEVEEPLGSGPSVLGTGTGGSGGFHLAQQASA  
 SGSVSIEEIDLEGKFVQLKNNSDKDQSLGNWRIKRQVLEEGEEIAYKFTP KYILRAGQM  
 VTVWAAGAGVAHSPSTLVWKGQSSWGTGESFRTVLVNADGEEVAMRTVKKSSV  
 MRENENGEEEEEAEFGEEEDLFHQQGDPRTTSRGCYVMTRTRPLEQKLISEEDLAA  
 NDILDYKDDDDKV

<b>Purity</b>	> 80% as determined by SDS-PAGE and Coomassie blue staining
<b>Stability</b>	Stable for 3 months from receipt of products under proper storage and handling conditions.
<b>Storage</b>	Store at -80 centigrade. Avoid repeated freeze-thaw cycles.
<b>Concentration</b>	50 µg/mL as determined by BCA
<b>Storage Buffer</b>	100 mM glycine, 25 mM Tris-HCl, pH 7.3.

## GENE INFORMATION

<b>Gene Name</b>	LMNB2 lamin B2 [ Homo sapiens (human) ]
<b>Official Symbol</b>	LMNB2
<b>Synonyms</b>	LMNB2; lamin B2; LMN2; lamin-B2; LAMB2; MGC2721;
<b>Gene ID</b>	84823
<b>mRNA Refseq</b>	NM_032737
<b>Protein Refseq</b>	NP_116126

 Tel: 1-631-559-9269 1-516-512-3133

 Email: [info@creative-biomart.com](mailto:info@creative-biomart.com)  Fax: 1-631-938-8127

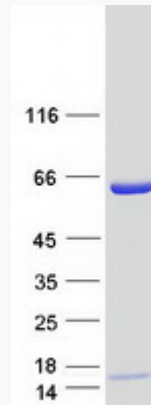
 45-1 Ramsey Road, Shirley, NY 11967, USA



MIM 150341

UniProt ID Q03252

SDS-PAGE



Tel: 1-631-559-9269 1-516-512-3133

Email: [info@creative-biomart.com](mailto:info@creative-biomart.com) Fax: 1-631-938-8127

45-1 Ramsey Road, Shirley, NY 11967, USA