

Recombinant Human LMO1 protein, GST-tagged

Cat. No. LMO1-5175H Lot. No. (See product label)

SPECIFICATION

Product Overview	Recombinant Human LMO1 protein(P25800)(5-156aa), fused to N-terminal GST tag, was expressed in E. coli.
Species	Human
Source	E.coli
ProteinLength	5-156aa
Form	If the delivery form is liquid, the default storage buffer is Tris/PBS-based buffer, 5%-50% glycerol. If the delivery form is lyophilized powder, the buffer before lyophilization is Tris/PBS-based buffer, 6% Trehalose, pH 8.0.
Molecular Mass	44.4 kDa
Purity	Greater than 90% as determined by SDS-PAGE.
Storage	Store at -20°C/-80°C upon receipt, aliquoting is necessary for multiple use. Avoid repeated freeze-thaw cycles.
Reconstitution	Please reconstitute protein in deionized sterile water to a concentration of 0.1-1.0 mg/mL. We recommend to add 5-50% of glycerol (final concentration) and aliquot for long-term storage at -20°C/-80°C. Our default final concentration of glycerol is 50%.

 Tel: 1-631-559-9269 1-516-512-3133

 Email: info@creative-biomart.com  Fax: 1-631-938-8127

 45-1 Ramsey Road, Shirley, NY 11967, USA

GENE INFORMATION

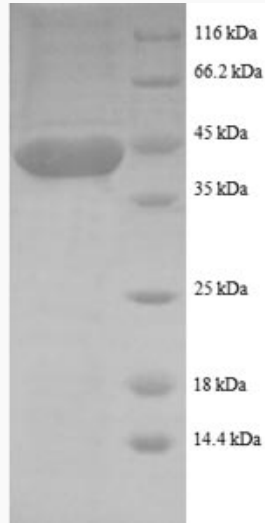
Gene Name	LMO1 LIM domain only 1 (rhombotin 1) [Homo sapiens]
Official Symbol	LMO1
Synonyms	LMO1; LIM domain only 1 (rhombotin 1); RBTN1; rhombotin-1; RHOM1; TTG1; LMO-1; LIM domain only protein 1; cysteine-rich protein TTG-1; T-cell translocation protein 1; MGC116692;
Gene ID	4004
mRNA Refseq	NM_002315
Protein Refseq	NP_002306
MIM	186921
UniProt ID	P25800

 Tel: 1-631-559-9269 1-516-512-3133

 Email: info@creative-biomart.com  Fax: 1-631-938-8127

 45-1 Ramsey Road, Shirley, NY 11967, USA

SDS-PAGE



 Tel: 1-631-559-9269 1-516-512-3133

 Email: info@creative-biomart.com  Fax: 1-631-938-8127

 45-1 Ramsey Road, Shirley, NY 11967, USA