

Recombinant Full Length Human LNPEP Protein, C-Flag-tagged

Cat. No. LNPEP-306HFL **Lot. No.** (See product label)

SPECIFICATION

Product Overview	Recombinant Full Length Human LNPEP Protein, fused to Flag-tag at C-terminus, was expressed in Mammalian cells.
Species	Human
Source	Mammalian Cells
Description	This gene encodes a zinc-dependent aminopeptidase that cleaves vasopressin, oxytocin, lys-bradykinin, met-enkephalin, dynorphin A and other peptide hormones. The protein can be secreted in maternal serum, reside in intracellular vesicles with the insulin-responsive glucose transporter GLUT4, or form a type II integral membrane glycoprotein. The protein catalyzes the final step in the conversion of angiotensinogen to angiotensin IV (AT4) and is also a receptor for AT4. Alternative splicing results in multiple transcript variants encoding different isoforms.
Form	25 mM Tris HCl, pH 7.3, 100 mM glycine, 10% glycerol.
Molecular Mass	117.2 kDa
AA Sequence	MEPFTNDRLQLPRNMIENSMFEEEPDVVDLAKEPCLHPLEPDEVEYEPGRSRLLVRLGLGEHEMEEDEEDY ESSAKLLGMSFMNRSSGLRNSATGYRQSPDGACSVPSARTMVCVAFVIVVAVSVIMVIYLLPRCTFTKEG CHKKNQSIGLIQPFATNGKLFVWAQIRLPTAVVPLRYELSLHPNLTSMTFRGSVTISVQALQVTWNIILH STGHNISRVTFMSAVS SQEKKAEILEYAYHGQIAIVAPEALLAGHNYTLKIEYSANISSSYGFGFSYT DESN

 Tel: 1-631-559-9269 1-516-512-3133

 Email: info@creative-biomart.com  Fax: 1-631-938-8127

 45-1 Ramsey Road, Shirley, NY 11967, USA

EKKYFAATQFEPLAARSAPFCFDEPAFKATFIIKIIRDEQYTALSNMPKKSSVVLDDGL
 VQDEFSE SVKMSTYLVAFIVGEMKNLSQDVNGTLVSIYAVPEKIGQVHYALETTVKL
 LEFFQNYFEIQYPLKKLDLV AIPDFEAGAMENWGLLTFREETLLYDSNTSSMADRKL
 VTKIAHELAHQWFGNLVTMKWWNDLWLNAGFA TFMEYFSLEKIFKELSSYEDFLD
 ARFKTMKKDSLNSSHPISSSVQSSEQIEEMFDSLSYFKGSSLLLMLK TYLSEDFVQH
 AVVLYLHNHSYASIQSDDLWDSFNEVTNQTLDVKRMMKTWTLQKGFPLVTVQKKGK
 ELFI QQERFFLNMKPEIQPSDTSYLWHIPLSYVTEGRNYSKYQSVSLDDKKSGVINLT
 EEVLWVKVNINMNGYY IVHYADDDWEALIHQLKINPYVLSDKDRANLINNIFELAGLG
 KVPLKRAFDLINYLGNEHTAPITEALF QTDLIYNLLEKLGMYMDLASRLVTRVFKLLQN
 QIQQQTWTDEGTPSMRELSALLEFACTHNLGNCSTTAM KLFDDWMASNGTQSLP
 TDVMTTVFKVGAKTDKGWSFLLGKYISIGSEAEKNKILEALASSEDVRKLYWLM KSS
 LNGDNFRTQKLSFIIRTVGRHFPGHLLAWDFVKENWNKLVQKFPLGSYTIQNIVAGS
 TYLFSTKTHL
 SEVQAFFENQSEATFRLRCVQEALEVIQLNIQWMEKNLKSLTWWLTRTRPLEQKLIS
 EEDLAANDILDYKDDDDKV

Purity > 80% as determined by SDS-PAGE and Coomassie blue staining.

Stability Stable for 12 months from the date of receipt of the product under proper storage and handling conditions. Avoid repeated freeze-thaw cycles.

Storage Store at -80 centigrade.

Concentration >50 ug/mL as determined by microplate BCA method.

Preparation Recombinant protein was captured through anti-DDK affinity column followed by conventional chromatography steps.

Protein Families Druggable Genome, Protease, Secreted Protein, Transmembrane

 Tel: 1-631-559-9269 1-516-512-3133

 Email: info@creative-biomart.com  Fax: 1-631-938-8127

 45-1 Ramsey Road, Shirley, NY 11967, USA

Protein Pathways	Renin-angiotensin system
-------------------------	--------------------------

Full Length	Full L.
--------------------	---------

GENE INFORMATION

Gene Name	LNPEP leucyl and cystinyl aminopeptidase [Homo sapiens (human)]
------------------	---

Official Symbol	LNPEP
------------------------	-------

Synonyms	CAP; IRAP; PLAP; P-LAP
-----------------	------------------------

Gene ID	4012
----------------	------

mRNA Refseq	NM_005575.3
--------------------	-------------

Protein Refseq	NP_005566.2
-----------------------	-------------

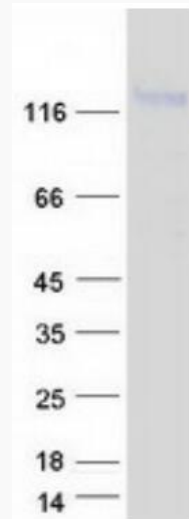
MIM	151300
------------	--------

UniProt ID	Q9UIQ6
-------------------	--------

 Tel: 1-631-559-9269 1-516-512-3133

 Email: info@creative-biomart.com  Fax: 1-631-938-8127

 45-1 Ramsey Road, Shirley, NY 11967, USA



Coomassie blue staining of purified LNPEP protein.

 Tel: 1-631-559-9269 1-516-512-3133

 Email: info@creative-biomart.com  Fax: 1-631-938-8127

 45-1 Ramsey Road, Shirley, NY 11967, USA