

Recombinant Human LNPEP Protein, Myc/DDK-tagged, C13 and N15-labeled

Cat. No. LNPEP-3469H Lot. No. (See product label)

SPECIFICATION

Product Overview	LNPEP MS Standard C13 and N15-labeled recombinant protein (NP_005566) with a C-terminal MYC/DDK tag, was expressed in HEK293 cells.
Species	Human
Source	HEK293
Description	<p>This gene encodes a zinc-dependent aminopeptidase that cleaves vasopressin, oxytocin, lys-bradykinin, met-enkephalin, dynorphin A and other peptide hormones. The protein can be secreted in maternal serum, reside in intracellular vesicles with the insulin-responsive glucose transporter GLUT4, or form a type II integral membrane glycoprotein. The protein catalyzes the final step in the conversion of angiotensinogen to angiotensin IV (AT4) and is also a receptor for AT4. Alternative splicing results in multiple transcript variants encoding different isoforms.</p>
Molecular Mass	117.2 kDa
AA Sequence	<pre>MEPFTNDRLQLPRNMIENSMFEEEPDVVDLAKEPCLHPLEPDEVEYEPGRSRLVLR GLGEHEMEEDEEDYESSAKLLGMSFMNRSSGLRNSATGYRQSPDGACSVPSART MVCFAFVIVVAVSVIMVIYLLPRCTFTKEGCHKKNQSIGLIQPFATNGKLPWAQIRLP TAVVPLRYELSLHPNLTSMTFRGSVTISVQALQVTWNILHSTGHNISRVTFMSAVSS QEKQAEILEYAYHGQIAIVAPEALLAGHNYTLKIEYSANISSSYGFYGFYSYTDSENEK KYFAATQFEPLAARSAPFCFDEPAFKATFIIKIIRDEQYTALSNMPKKSSVLLDDGLVQ</pre>

 Tel: 1-631-559-9269 1-516-512-3133

 Email: info@creative-biomart.com  Fax: 1-631-938-8127

 45-1 Ramsey Road, Shirley, NY 11967, USA



DEFSESVKMSTYLVAFIVGEMKNLSQDVNGTLVSIYAVPEKIGQVHYALETTVKLEF
 FQNYFEIQYPLKLDLVAIPDFEAGAMENWGLLTFREETLLYDSNTSSMADRKLVTKII
 AHELAHQWFGNLVTMKWWNDLWLNIEGFATFMEYFSLEKIFKELSSYEDFLDARFKT
 MKKDSLNSSHPISSSVQSSEQIEEMFDSLSYFKGSSLLLMLKTYLSEDFVQHAVVLYL
 HNHSYASIQSDDLWDSFNEVTNQTLQKGFPLVTVQKKGKELFIQQ
 ERFFLNMKPEIQPSDTSYLWHIPLSYVTEGRNYSKYQSVSLDDKKSGVINLTEEVLW
 VKVNINMNGYYIVHYADDDWEALIHQLKINPYVLSDKDRANLNNIFELAGLGKVPLKR
 AFDLINYLGNNHTAPITEALFQTDLIYNLLEKLGYMDLASRLVTRVFKLLQNQIQQQT
 WTDEGTPSMRELRALLEFACTHNLGNCSTTAMKLFDDWMASNGTQSLPTDVMTT
 VFKVGAKTDKGWSFLLGKYISIGSEAEKNKILEALASSEDVRKLYWLMKSSLNGDNF
 RTQKLSFIIRTVGRHFPGHLLAWDFVKENWNKLVQKFPPLGSYTIQNIVAGSTYLFSTK
 THLSEVQAFFENQSEATFRLRCVQEALEVIQLNIQWMEKNLKSLTWLWLRTRPLEQ
 KLISEEDLAANDILDYKDDDDKV

Purity	> 80% as determined by SDS-PAGE and Coomassie blue staining
Stability	Stable for 3 months from receipt of products under proper storage and handling conditions.
Storage	Store at -80 centigrade. Avoid repeated freeze-thaw cycles.
Concentration	50 µg/mL as determined by BCA
Storage Buffer	100 mM glycine, 25 mM Tris-HCl, pH 7.3.

GENE INFORMATION

Gene Name	LNPEP leucyl/cystinyl aminopeptidase [Homo sapiens (human)]
Official Symbol	LNPEP

Synonyms LNPEP; leucyl/cystinyl aminopeptidase; leucyl-cystinyl aminopeptidase; CAP; cystinyl aminopeptidase; P LAP; placental leucine aminopeptidase; PLAP; otase; oxytocinase; vasopressinase; AT (4) receptor; angiotensin IV receptor; insulin-regulated aminopeptidase; insulin-responsive aminopeptidase; insulin-regulated membrane aminopeptidase; IRAP; P-LAP;

Gene ID [4012](#)

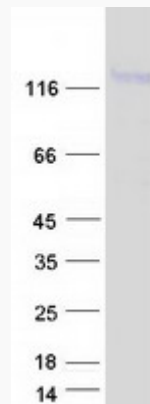
mRNA Refseq [NM_005575](#)

Protein Refseq [NP_005566](#)

MIM [151300](#)

UniProt ID [Q9UIQ6](#)

SDS-PAGE



 Tel: 1-631-559-9269 1-516-512-3133

 Email: info@creative-biomart.com  Fax: 1-631-938-8127

 45-1 Ramsey Road, Shirley, NY 11967, USA