

Recombinant Human LONP1 protein, GST-tagged

Cat. No. LONP1-32H Lot. No. (See product label)

SPECIFICATION

Product Overview	Recombinant Human LONP1 protein(614-959 aa), fused with GST tag, was expressed in E. coli.
Species	Human
Source	E.coli
ProteinLength	614-959 aa
Form	The purified protein was Lyophilized from sterile PBS (58mM Na ₂ HPO ₄ , 17mM NaH ₂ PO ₄ , 68mM NaCl, pH7.4). 5 % trehalose and 5 % mannitol are added as protectant before lyophilization. The elution buffer contain 300mM imidazole.
AA Sequence	EQNANFLDHYLDVPVDLSKVLFICTANVTDTIPEPLRDRMEMINVSGYVAQEKLAI RYLVPQARALCGLDESKAKLSSDVLTLLIKQYCRESGVRNLQKQVEKVLKRSAYKIV SGEAEVSEVTPENLQDFVVGKPVFTVERMYDVTPPGVVMGLAWTAMGGSTLFFVETS LRRPQDKDAKGDKDGSLEVTGQLGEVMKESARIAYTFARAFLMQHAPANDYLVTS IHLHVPEGATPKDGPSAGCTIVTALLSLAMGRPVRQNLAMTGEVSLTGKILPVGGI KTIAAKRAGVTCIVLPAENKKDFYDLAAFITEGLEVHFVHEHYREIFDIAFPDEQAE ALAVR
Purity	85%, by SDS-PAGE with Coomassie Brilliant Blue staining.
Storage	Short-term storage: Store at 2-8°C for (1-2 weeks). Long-term storage: Aliquot and store at -20°C to -80°C for up to 3 months,

 Tel: 1-631-559-9269 1-516-512-3133

 Email: info@creative-biomart.com  Fax: 1-631-938-8127

 45-1 Ramsey Road, Shirley, NY 11967, USA

reconstitution with sterile water and addition of an equal volume of glycerol. Avoid repeat freeze-thaw cycles.

Reconstitution

Reconstitute at 0.25 g/μl in 200 μl sterile water for short-term storage. After reconstitution with sterile water, if glycerol has no effect on subsequent experiments, it is recommended to add an equal volume of glycerol for long-term storage.

GENE INFORMATION

Gene Name [LONP1 lon peptidase 1, mitochondrial \[Homo sapiens \]](#)

Official Symbol [LONP1](#)

Synonyms

LONP1; lon peptidase 1, mitochondrial; protease, serine, 15 , PRSS15; lon protease homolog, mitochondrial; hLON; LonHS; PIM1; serine protease 15; protease, serine, 15; Lon protease-like protein; hLON ATP-dependent protease; mitochondrial lon peptidase 1; mitochondrial lon protease-like protein; mitochondrial ATP-dependent protease Lon; LON; LONP; PRSS15; MGC1498;

Gene ID [9361](#)

mRNA Refseq [NM_004793](#)

Protein Refseq [NP_004784](#)

MIM [605490](#)

UniProt ID [P36776](#)

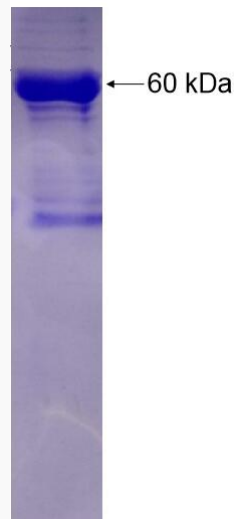
 Tel: 1-631-559-9269 1-516-512-3133

 Email: info@creative-biomart.com  Fax: 1-631-938-8127

 45-1 Ramsey Road, Shirley, NY 11967, USA



SDS-PAGE



Tel: 1-631-559-9269 1-516-512-3133

Email: info@creative-biomart.com Fax: 1-631-938-8127

45-1 Ramsey Road, Shirley, NY 11967, USA