

Recombinant Human LONP1 protein, His&Myc-tagged

Cat. No. LONP1-7642H Lot. No. (See product label)

SPECIFICATION

Product Overview	Recombinant Human LONP1 protein(P36776)(124-368aa), fused with N-terminal His tag and C-terminal Myc tag, was expressed in E.coli.
Species	Human
Source	E.coli
ProteinLength	124-368aa
Form	If the delivery form is liquid, the default storage buffer is Tris/PBS-based buffer, 5%-50% glycerol. If the delivery form is lyophilized powder, the buffer before lyophilization is Tris/PBS-based buffer, 6% Trehalose, pH 8.0.
Molecular Mass	35.6 kDa
Purity	Greater than 90% as determined by SDS-PAGE.
Storage	Store at -20°C/-80°C upon receipt, aliquoting is necessary for mutiple use. Avoid repeated freeze-thaw cycles.
Reconstitution	We recommend that this vial be briefly centrifuged prior to opening to bring the contents to the bottom. Please reconstitute protein in deionized sterile water to a concentration of 0.1-1.0 mg/mL.We recommend to add 5-50% of glycerol (final concentration) and aliquot for long-term storage at -20°C/-80°C.

 Tel: 1-631-559-9269 1-516-512-3133

 Email: info@creative-biomart.com  Fax: 1-631-938-8127

 45-1 Ramsey Road, Shirley, NY 11967, USA

AA Sequence

LPLIAITRNPVFPFIKIIIEVKNKKLVELLRRKVRLAQPYVGVFLKRDDSNESDVVESLD
 EIYHTGTFAQIHEMQDLGDKLRMIVMGHRRVHISRQLEVEPEEPEAENKHKPRRKS
 RGKKEAEDELSARHPAELAMEPTPELPAEVLMEVENVVHEDFQVTEEVKALTAEIV
 KTIRDIIALNPLYRESVLQMMQAGQRVVDNPIYLSDMGAALTGAESHELQDVLEETNI
 PKRLYKALSLLKK

GENE INFORMATION

Gene Name [LONP1 lon peptidase 1, mitochondrial \[Homo sapiens \]](#)

Official Symbol [LONP1](#)

Synonyms LONP1; lon peptidase 1, mitochondrial; protease, serine, 15 , PRSS15; lon protease homolog, mitochondrial; hLON; LonHS; PIM1; serine protease 15; protease, serine, 15; Lon protease-like protein; hLON ATP-dependent protease; mitochondrial lon peptidase 1; mitochondrial lon protease-like protein; mitochondrial ATP-dependent protease Lon; LON; LONP; PRSS15; MGC1498;

Gene ID [9361](#)

mRNA Refseq [NM_004793](#)

Protein Refseq [NP_004784](#)

MIM [605490](#)

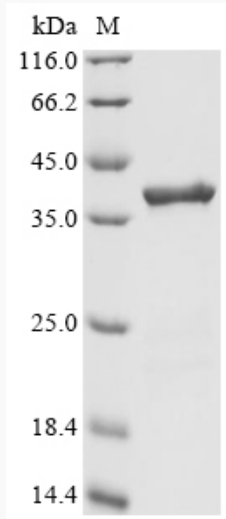
UniProt ID [P36776](#)

 Tel: 1-631-559-9269 1-516-512-3133

 Email: info@creative-biomart.com  Fax: 1-631-938-8127

 45-1 Ramsey Road, Shirley, NY 11967, USA

SDS-PAGE



 Tel: 1-631-559-9269 1-516-512-3133

 Email: info@creative-biomart.com  Fax: 1-631-938-8127

 45-1 Ramsey Road, Shirley, NY 11967, USA