

# Recombinant Human LOX Protein, Myc/DDK-tagged, C13 and N15-labeled

**Cat. No.** LOX-6669H    **Lot. No.** (See product label)

## SPECIFICATION

<b>Product Overview</b>	LOX MS Standard C13 and N15-labeled recombinant protein (NP_002308) with a C-terminal MYC/DDK tag, was expressed in HEK293 cells.
<b>Species</b>	Human
<b>Source</b>	HEK293
<b>ProteinLength</b>	1-417 aa
<b>Description</b>	This gene encodes a member of the lysyl oxidase family of proteins. Alternative splicing results in multiple transcript variants, at least one of which encodes a preproprotein that is proteolytically processed to generate a regulatory propeptide and the mature enzyme. The copper-dependent amine oxidase activity of this enzyme functions in the crosslinking of collagens and elastin, while the propeptide may play a role in tumor suppression. In addition, defects in this gene have been linked with predisposition to thoracic aortic aneurysms and dissections.
<b>Molecular Mass</b>	46.8 kDa
<b>AA Sequence</b>	<p>MRF<del>A</del>WTVLLLLGPLQLCALVHCAPPAAGQQQPPREPPAAPGAWRQQIQWENNGQV  FSLLSLGSQYQPQRRRDPGAAVPGAANASAQQPRTPIILLIRDNRRTAAARTRTAGSS  GVTAGRPRPTARHWFQAGYSTSRAREAGASRAENQTAPGEVPALSNLRPPSRVDG  MVGDDPYNPYKYSDDNPYNYDYTYERPRPGGRYRPGYGTGYFYGLPDLVADP  YYIQASTYVQKMSMYNLRCAAEEENCLASTAYRADVRDYDHRVLLRFPQRVKNQGTS</p>

 Tel: 1-631-559-9269    1-516-512-3133

 Email: [info@creative-biomart.com](mailto:info@creative-biomart.com)     Fax: 1-631-938-8127

 45-1 Ramsey Road, Shirley, NY 11967, USA



DFLPSRPRYSWEWHSCHQHYHSMDEFSDHYDLLDANTQRRVAEGHKASFCLEDTS  
CDYGYHRRFACTAHTQGLSPGCYDTYGADIDCQWIDITDVKPGNYILKVSVNPSYLV  
PESDYTNNVVRCDIRYTGHAYASGCTISPYTRTRPLEQKLISEEDLAANDILDYKDD  
DDKV

**Purity** > 80% as determined by SDS-PAGE and Coomassie blue staining

**Stability** Stable for 3 months from receipt of products under proper storage and handling conditions.

**Storage** Store at -80 centigrade. Avoid repeated freeze-thaw cycles.

**Concentration** 50 µg/mL as determined by BCA

**Storage Buffer** 100 mM glycine, 25 mM Tris-HCl, pH 7.3.

## GENE INFORMATION

**Gene Name** LOX lysyl oxidase [ Homo sapiens (human) ]

**Official Symbol** LOX

**Synonyms** LOX; lysyl oxidase; protein-lysine 6-oxidase; MGC105112;

**Gene ID** 4015

**mRNA Refseq** NM\_002317

**Protein Refseq** NP\_002308

**MIM** 153455

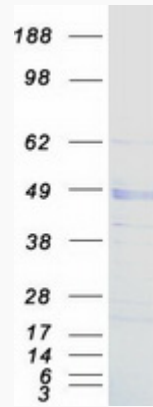
Tel: 1-631-559-9269 1-516-512-3133


Email: [info@creative-biomart.com](mailto:info@creative-biomart.com) Fax: 1-631-938-8127

45-1 Ramsey Road, Shirley, NY 11967, USA


UniProt ID P28300

SDS-PAGE



 Tel: 1-631-559-9269 1-516-512-3133

 Email: [info@creative-biomart.com](mailto:info@creative-biomart.com)  Fax: 1-631-938-8127

 45-1 Ramsey Road, Shirley, NY 11967, USA