

Native soybeans LOX1.1 Protein

Cat. No. LOX1.1-61S Lot. No. (See product label)

SPECIFICATION

Product Overview	Native Soybeans LOX1.1 and LOX3 protein without tag was isolated from Soybeans.
Species	Soybean
Source	Soybean
Molecular Mass	94 kDa
Purity	≥70% estimated by SDS-PAGE
Unit Definition	One unit of enzyme causes an increase of 0.001 A at 234 nm when incubated with 7 μM linoleate at 25 centigrade in 0.1 M borate buffer, pH 9.0, in a total volume of 1.0 mL. Lipoxygenase activity quantified spectrophotometrically.
Stability	≥ 1 year
Storage	Store it at -80 centigrade
Storage Buffer	100 mM Tris, pH 7.0, 10% glycerol

GENE INFORMATION

Gene Name	LOX1.1 seed linoleate 13S-lipoxygenase-1 [Glycine max (soybean)]
Official Symbol	LOX1.1

 Tel: 1-631-559-9269 1-516-512-3133

 Email: info@creative-biomart.com  Fax: 1-631-938-8127

 45-1 Ramsey Road, Shirley, NY 11967, USA

Synonyms LOX1.1; seed linoleate 13S-lipoxygenase-1; L-1; Lx1; seed linoleate 13S-lipoxygenase-1; lipoxygenase 1; lipoxygenase L-1; mutant lipoxygenase 1; seed linoleate 9S-lipoxygenase-1

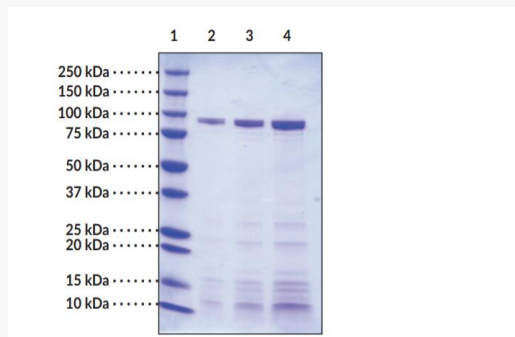
Gene ID [547923](#)

mRNA Refseq [NM_001249224](#)

Protein Refseq [NP_001236153](#)

UniProt ID [P08170](#)

**SDS-PAGE Analysis
of LOX1.1**



Lane 1: MW Markers; Lane 2: Lipoxygenase from Glycine max (soybean) (1 μ g); Lane 3: Lipoxygenase from Glycine max (soybean) (2 μ g); Lane 4: Lipoxygenase from Glycine max (soybean) (4 μ g). Representative gel image shown; actual purity may vary between each batch.

 Tel: 1-631-559-9269 1-516-512-3133

 Email: info@creative-biomart.com  Fax: 1-631-938-8127

 45-1 Ramsey Road, Shirley, NY 11967, USA