

Recombinant Human LOXL2 Protein, His-tagged

Cat. No. LOXL2-210H Lot. No. (See product label)

SPECIFICATION

Product Overview	Biotinylated Recombinant Human Lysyl Oxidase Homolog 2 is produced by Human 293 Cells. The target gene encoding Q26-Q774 is expressed with an 8His tag at the N terminus.
Species	Human
Source	Human Cells
ProteinLength	26-774 a.a.
Description	Lysyl oxidase homolog 2 (LOXL2) is a secreted protein that belongs to the lysyl oxidase family. The prototypic member of the family is essential to the biogenesis of connective tissue, encoding an extracellular copper-dependent amine oxidase that catalyzes the first step in the formation of crosslinks in collagens and elastin. LOXL2 is expressed in many tissues, with the highest expression in reproductive tissues, placenta, uterus and prostate, and is up-regulated in a number of cancers cells and tissues. LOXL2 changes the structure of histones and thus changes the shape of the cells, making it easier for the cancer cells to metastasize. LOXL2 expression could also be used as a molecular target in the prevention of breast cancer progression.
Form	Lyophilized from a 0.2 um filtered solution of PBS, pH 7.2
Molecular Mass	Predicted Molecular Weight: 87.4kDa Apparent Molecular Weight: LOXL2 appeared at 90kDa in a reducing SDS-PAGE gel.

 Tel: 1-631-559-9269 1-516-512-3133

 Email: info@creative-biomart.com  Fax: 1-631-938-8127

 45-1 Ramsey Road, Shirley, NY 11967, USA

AA Sequence	Q26-Q774
Endotoxin	Less than 0.1 EU/ug.
Purity	>95%
Storage	<p>Lyophilized protein should be stored at < -20 centigrade, though stable at room temperature for 3 weeks.</p> <p>Reconstituted protein solution can be stored at 4-7 centigrade for 2-7 days. Aliquots of reconstituted samples are stable at < -20 centigrade for 3 months.</p> <p>Always centrifuge tubes before opening. Do not mix by vortex or pipetting.</p>
Reconstitution	<p>It is not recommended to reconstitute to a concentration less than 100µg/ml.</p> <p>Dissolve the lyophilized protein in distilled water.</p> <p>Please aliquot the reconstituted solution to minimize freeze-thaw cycles.</p>
Quality Statement	Purity: greater than 95% as determined by reducing SDS-PAGE.
Shipping	<p>The product is shipped on dry ice pack.</p> <p>Upon receipt, store it immediately at the temperature listed below.</p>

GENE INFORMATION

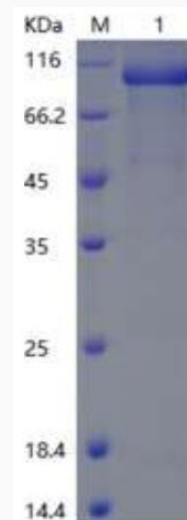
Gene Name	LOXL2 lysyl oxidase like 2 [Homo sapiens (human)]
Official Symbol	LOXL2
Synonyms	<p>LOL2; LOR2; Lysyl Oxidase Homolog 2; lysyl oxidase related 2; lysyl oxidase-like 2;</p> <p>Lysyl oxidase-like protein 2; Lysyl oxidase-related protein 2; Lysyl oxidase-related protein WS9-14</p>

 Tel: 1-631-559-9269 1-516-512-3133

 Email: info@creative-biomart.com  Fax: 1-631-938-8127

 45-1 Ramsey Road, Shirley, NY 11967, USA

Gene ID	4017
mRNA Refseq	NM_002318.3
Protein Refseq	NP_002309.1
MIM	606663
UniProt ID	Q9Y4K0

SDS-PAGE

 Tel: 1-631-559-9269 1-516-512-3133

 Email: info@creative-biomart.com  Fax: 1-631-938-8127

 45-1 Ramsey Road, Shirley, NY 11967, USA