

Recombinant Human LOXL2 protein, Fc-tagged

Cat. No. LOXL2-330H **Lot. No.** (See product label)

SPECIFICATION

Product Overview	Recombinant Human LOXL2 protein (Gln26-Gln774), fused to human IgG1 Fc tag at C-terminus, was expressed in human 293 cells (HEK293).
Species	Human
Source	HEK293
ProteinLength	749
Description	Lysyl oxidase homolog 2 is also known as LOXL2, Lysyl oxidase-like protein 2, which is expressed in many tissues, highest expression in reproductive tissues, placenta, uterus and prostate, Up-regulated in a number of cancers cells and tissues. LOXL2 mediates the post-translational oxidative deamination of lysine residues on target proteins leading to the formation of deaminated lysine (allysine). When secreted in extracellular matrix, promotes cross-linking of extracellular matrix proteins by mediating oxidative deamination of peptidyl lysine residues in precursors to fibrous collagen and elastin. LOXL2 acts as a regulator of sprouting angiogenesis, probably via collagen IV scaffolding. When nuclear, acts as a transcription corepressor and specifically mediates deamination of trimethylated 'Lys-4' of histone H3 (H3K4me3), a specific tag for epigenetic transcriptional activation. LOXL2 acts as a regulator of chondrocyte differentiation, probably by regulating expression of factors that control chondrocyte differentiation.
Form	Lyophilized from 0.22 um filtered solution in Tris with Glycine, Arginine and NaCl,

 Tel: 1-631-559-9269 1-516-512-3133

 Email: info@creative-biomart.com  Fax: 1-631-938-8127

 45-1 Ramsey Road, Shirley, NY 11967, USA

	pH7.5, 10% trehalose.
Molecular Mass	The protein has a calculated MW of 111.6 kDa. As a result of Glycosylation, the protein migrates as 120-130 kDa under reducing (R) condition, and 200-240 kDa under non-reducing (NR) condition (SDS-PAGE).
Endotoxin	Less than 1.0 EU per ug by the LAL method.
Purity	>75% as determined by SDS-PAGE.
Storage	For long term storage, the product should be stored at lyophilized state at -20 centigrade or lower. Please avoid repeated freeze-thaw cycles. This product is stable after storage at: -20 centigrade to -70 centigrade for 12 months in lyophilized state; -70 centigrade for 3 months under sterile conditions after reconstitution.
Reconstitution	It is recommended that sterile water be added to the vial to prepare a stock solution of 0.2 ug/ul. Centrifuge the vial at 4°C before opening to recover the entire contents.

GENE INFORMATION

Gene Name	LOXL2
Official Symbol	LOXL2
Synonyms	LOXL2; lysyl oxidase-like 2; lysyl oxidase homolog 2; WS9 14; lysyl oxidase related 2; lysyl oxidase-like protein 2; lysyl oxidase-related protein 2; lysyl oxidase-related protein WS9-14; LOR2; WS9-14
Gene ID	4017

 Tel: 1-631-559-9269 1-516-512-3133

 Email: info@creative-biomart.com  Fax: 1-631-938-8127

 45-1 Ramsey Road, Shirley, NY 11967, USA

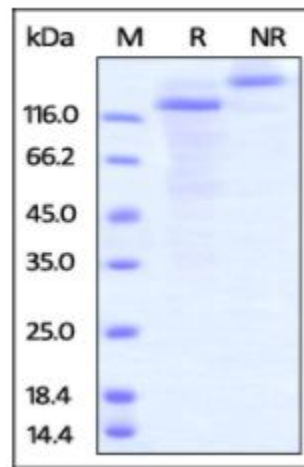
mRNA Refseq [NM_002318](#)

Protein Refseq [NP_002309](#)

MIM [606663](#)

UniProt ID [Q9Y4K0](#)

**SDS-PAGE of
LOXL2-330H**



Human LOXL2, Fc Tag on SDS-PAGE under reducing (R) and non-reducing (NR) conditions. The gel was stained overnight with Coomassie Blue. The purity of the protein is greater than 75%.

 Tel: 1-631-559-9269 1-516-512-3133

 Email: info@creative-biomart.com  Fax: 1-631-938-8127

 45-1 Ramsey Road, Shirley, NY 11967, USA