

Recombinant Human LOXL2 Protein (Gln26-Gln774), C-Avi-His tagged

Cat. No. LOXL2-4452H Lot. No. (See product label)

SPECIFICATION

Product Overview	Recombinant human LOXL2 (Gln26-Gln774) fused with the C-terminal Avi-His tag was expressed in Mammalian cells.
Species	Human
Source	Mammalian Cells
ProteinLength	Gln26-Gln774
Form	Lyophilized powder/frozen liquid
Molecular Mass	82.39 kDa
Endotoxin	< 1.0 EU/μg of the protein as determined by the LAL method.
Purity	>90% as determined by SDS-PAGE.
Notes	For research use only.
Storage	Use a manual defrost freezer and avoid repeated freeze thaw cycles. Store at 2 to 8 centigrade for one week. Store at -20 to -80 centigrade for twelve months from the date of receipt.
Storage Buffer	Supplied as solution form in PBS or lyophilized from PBS.

 Tel: 1-631-559-9269 1-516-512-3133

 Email: info@creative-biomart.com  Fax: 1-631-938-8127

 45-1 Ramsey Road, Shirley, NY 11967, USA

Reconstitution Reconstitute in sterile water for a stock solution.

Shipping They are shipped out with dry ice/blue ice unless customers require otherwise.

GENE INFORMATION

Gene Name LOXL2 lysyl oxidase-like 2 [Homo sapiens (human)]

Official Symbol LOXL2

Synonyms LOXL2; lysyl oxidase-like 2; lysyl oxidase homolog 2; WS9 14; lysyl oxidase related 2; lysyl oxidase-like protein 2; lysyl oxidase-related protein 2; lysyl oxidase-related protein WS9-14; LOR2; WS9-14;

Gene ID 4017

mRNA Refseq NM_002318

Protein Refseq NP_002309

MIM 606663

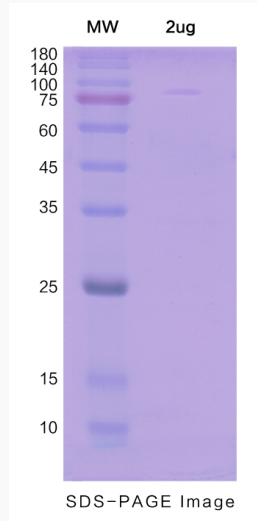
UniProt ID Q9Y4K0

 Tel: 1-631-559-9269 1-516-512-3133

 Email: info@creative-biomart.com  Fax: 1-631-938-8127

 45-1 Ramsey Road, Shirley, NY 11967, USA

SDS-PAGE



 Tel: 1-631-559-9269 1-516-512-3133

 Email: info@creative-biomart.com  Fax: 1-631-938-8127

 45-1 Ramsey Road, Shirley, NY 11967, USA