

Recombinant Human LOXL2 Protein, GST-tagged

Cat. No. LOXL2-4731H Lot. No. (See product label)

SPECIFICATION

| | |
|-------------------------|--|
| Product Overview | Human LOXL2 partial ORF (NP_002309, 675 a.a. - 773 a.a.) recombinant protein with GST-tag at N-terminal. |
| Species | Human |
| Source | Wheat Germ |
| Description | This gene encodes a member of the lysyl oxidase gene family. The prototypic member of the family is essential to the biogenesis of connective tissue, encoding an extracellular copper-dependent amine oxidase that catalyses the first step in the formation of crosslinks in collagens and elastin. A highly conserved amino acid sequence at the C-terminus end appears to be sufficient for amine oxidase activity, suggesting that each family member may retain this function. The N-terminus is poorly conserved and may impart additional roles in developmental regulation, senescence, tumor suppression, cell growth control, and chemotaxis to each member of the family. [provided by RefSeq] |
| Molecular Mass | 36.63 kDa |
| AA Sequence | NFGDQGITMGCWDMYRHDIDCQWVDITDVPPGDYLFQVVINPNFEVAESDYSNNIM KCRSRYDGHRIWMYNCHIGGSFSEETEKKFEHFSGLLNQLSP |
| Applications | Enzyme-linked Immunoabsorbent Assay Western Blot (Recombinant protein) Antibody Production |

 Tel: 1-631-559-9269 1-516-512-3133

 Email: info@creative-biomart.com  Fax: 1-631-938-8127

 45-1 Ramsey Road, Shirley, NY 11967, USA

Protein Array

| | |
|-----------------------|--|
| Notes | Best use within three months from the date of receipt of this protein. |
| Storage | Store at -80 centigrade. Aliquot to avoid repeated freezing and thawing. |
| Storage Buffer | 50 mM Tris-HCl, 10 mM reduced Glutathione, pH=8.0 in the elution buffer. |

GENE INFORMATION

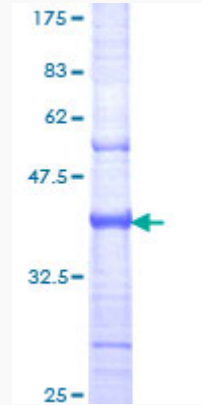
| | |
|------------------------|---|
| Gene Name | LOXL2 lysyl oxidase-like 2 [Homo sapiens] |
| Official Symbol | LOXL2 |
| Synonyms | LOXL2; lysyl oxidase-like 2; lysyl oxidase homolog 2; WS9 14; lysyl oxidase related 2; lysyl oxidase-like protein 2; lysyl oxidase-related protein 2; lysyl oxidase-related protein WS9-14; LOR2; WS9-14; |
| Gene ID | 4017 |
| mRNA Refseq | NM_002318 |
| Protein Refseq | NP_002309 |
| MIM | 606663 |
| UniProt ID | Q9Y4K0 |

 Tel: 1-631-559-9269 1-516-512-3133

 Email: info@creative-biomart.com  Fax: 1-631-938-8127

 45-1 Ramsey Road, Shirley, NY 11967, USA

**Quality Control
Testing**



12.5% SDS-PAGE Stained with Coomassie Blue

 Tel: 1-631-559-9269 1-516-512-3133

 Email: info@creative-biomart.com  Fax: 1-631-938-8127

 45-1 Ramsey Road, Shirley, NY 11967, USA