

## Recombinant Human LOXL4 protein, GST-tagged

Cat. No. LOXL4-194H Lot. No. (See product label)

### SPECIFICATION

<b>Product Overview</b>	Recombinant Human LOXL4(492-end) fused with GST tag at N-terminal was expressed in Insect cells.
<b>Species</b>	Human
<b>Source</b>	Insect Cells
<b>ProteinLength</b>	492-end
<b>Description</b>	LOXL4 or lysyl oxidase-like 4 is a member of the lysyl oxidase family of amine oxidases. LOXL4 catalyzes the final enzymatic step required for the lysine-derived crosslinks essential for the formation of collagen fibrils and insoluble elastic fibers within the extracellular matrix. LOXL4 can also contribute to developmental regulation, senescence, tumor suppression, cell growth control, and chemotaxis. LOXL4 is highly expressed in skeletal muscle, testis, and pancreas.
<b>Form</b>	50mM Tris-HCl, pH 7.5, 150mM NaCl, 10mM glutathione, 0.1mM EDTA, 0.25mM DTT, 0.1mM PMSF, 25% glycerol.
<b>Molecular Mass</b>	56 kDa
<b>Purity</b>	>70%
<b>Applications</b>	Enzyme Assay, Western Blot

 Tel: 1-631-559-9269 1-516-512-3133

 Email: [info@creative-biomart.com](mailto:info@creative-biomart.com)  Fax: 1-631-938-8127

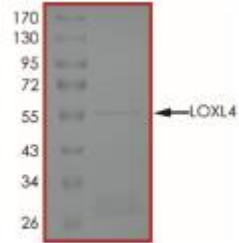
 45-1 Ramsey Road, Shirley, NY 11967, USA

<b>Stability</b>	1 year at -70 centigrade date of shipment.
<b>Storage</b>	Store product at -70 centigrade. For optimal storage, aliquot target into smaller quantities after centrifugation and store at recommended temperature. For most favorable performance, avoid repeated handling and multiple freeze/thaw cycles.
<b>Concentration</b>	0.05µg/µl
<b>GENE INFORMATION</b>	
<b>Gene Name</b>	LOXL4 lysyl oxidase-like 4 [ Homo sapiens ]
<b>Official Symbol</b>	LOXL4
<b>Synonyms</b>	LOXL4; lysyl oxidase-like 4; lysyl oxidase homolog 4; FLJ21889; LOXC; lysyl oxidase related C; lysyl oxidase-like protein 4; lysyl oxidase-like 4 pseudogene; lysyl oxidase-related protein C;
<b>Gene ID</b>	84171
<b>mRNA Refseq</b>	NM_032211
<b>Protein Refseq</b>	NP_115587
<b>MIM</b>	607318
<b>UniProt ID</b>	Q96JB6

 Tel: 1-631-559-9269 1-516-512-3133

 Email: [info@creative-biomart.com](mailto:info@creative-biomart.com)  Fax: 1-631-938-8127

 45-1 Ramsey Road, Shirley, NY 11967, USA



 Tel: 1-631-559-9269 1-516-512-3133

 Email: [info@creative-biomart.com](mailto:info@creative-biomart.com)  Fax: 1-631-938-8127

 45-1 Ramsey Road, Shirley, NY 11967, USA